

CYLINDER GAS PACKS AND MANIFOLDS

Product Catalog

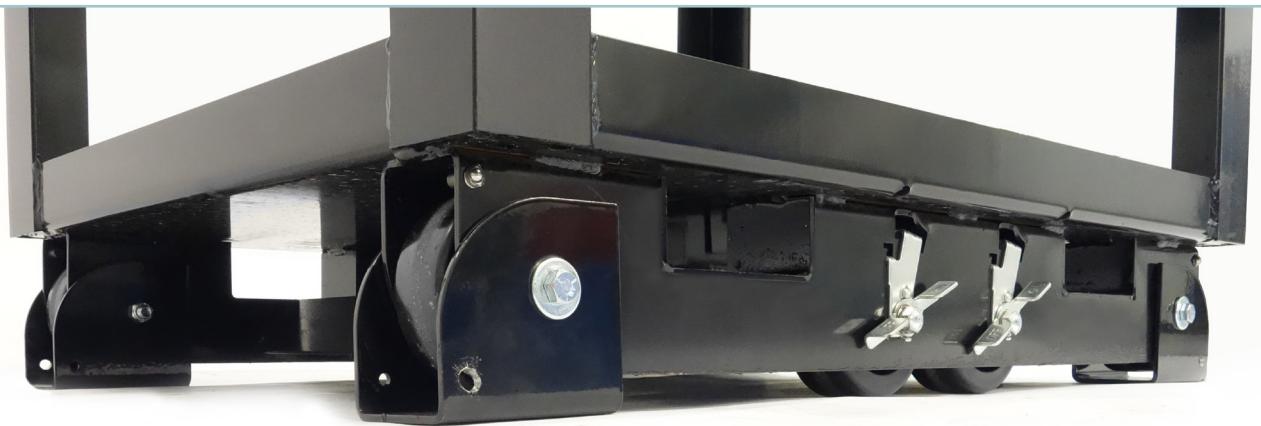
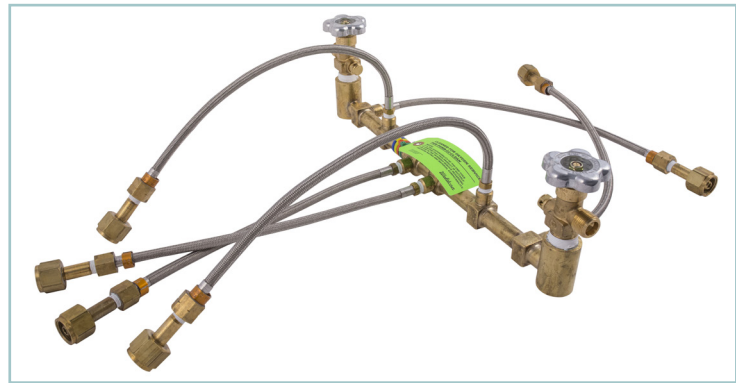


TABLE OF CONTENTS

Industrial Gas Packs *with Wheels*

Wolf Pack 2-in-1 Series	pg. 4-5
LowPro M1 In-Line Series	pg. 10-11
LowPro Classic Series	pg. 12-13
LowPro Side-Loading Options	pg. 16
LowPro Side-Loading FEMA Option	pg. 16
LowPro Ultra Series	pg. 17
LowPro for Acetylene Cylinders	pg. 17

Industrial Gas Packs *without Wheels*

Wolf Pack 16 Cylinder Skid Base Series	
Designed to be transported with a pallet jack, fork truck or crane.	pg. 8-9
LowPro M2 Skid Base Series	
Designed to be transported with a pallet jack, fork truck or crane.	pg. 14-15
18 Cylinder Gas Pack Pallet Manifold	
Alternative option for delivering higher volumes of gas	pg. 22-23

Manifold and Lead (Pigtail) Options

Manifolds specifically for Wolf Pack Gas Packs	pg. 6-7, 9
Manifolds specifically for LowPro Gas Packs	pg. 11,18-21

WELDCOA IS A PROUD USA MANUFACTURER

Located in Aurora, IL, Weldcoa is an innovative manufacturer of products that store, transport, or fill compressed gas cylinders. Our exclusive, patented-filling, automation, storage and transportation solutions provide cost-reduction innovations for every step of your process, while providing unmatched levels of reliability and safety. From the most basic to the most demanding, we have the products that will support you and your customer's needs better than anyone in the high-pressure gas industry.

OUR STORY

Founder Richard Bennett created Weldcoa to support his Gas & Welding Distributorship, Benster Welding, in 1968. We have been supporting the Cylinder Gas Industry ever since. Richard Bennett was not an engineer, he was an inventor. Weldcoa was his "Mad Scientist" shop where he experimented with America's very first Palletized Cylinder Transportation System. From there, Weldcoa has grown into an A to Z supplier of cylinder transportation, storage, and filling. Today Weldcoa's patented automated systems are considered the Global Leader in both Next- Step Technology and Long-Term Reliability. Weldcoa's patented Pallet System has grown into the most widely used system in North America.

Constantly Innovating Since 1968



WELDCOA FOUNDER RICHARD BENNETT AND PETE NEILSON



WELDCOA - YOUR ON DEMAND, IN STOCK PROVIDER

Three years ago Weldcoa began a top to bottom overhaul of our entire manufacturing process. We invested in nearly \$2,000,000 worth of automated manufacturing technology and equipment. The goal was to improve our quality, provide you with better delivery time and to become something that we have never been, the low cost provider.

Today, we are an in stock provider that can ship within 48 hours of receiving your P.O. on all of our standard in-stock products. What's more, we believe that you're going to be blown away by our new aggressive pricing position. Weldcoa is now able to provide you with the highest quality of "Made in the USA" products, when you need them, at the best possible price.



TEAM WELDCOA IS LIKE NONE OTHER

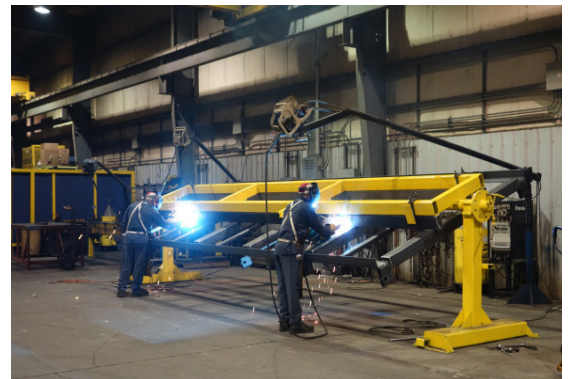
Weldcoa boasts an elite team of engineers, programmers and support staff who are heavily involved in every detail of our products from Research and Development to Installation and Start-up. Often, the team that designs your solutions is the very same team who installs and provides the long-term support for the equipment.

Everyone at Weldcoa is focused on providing you with the highest possible level of service and quality. Our products are built to your specification, carefully inspected, and always delivered on time and within budget.

A TRUE MANUFACTURER

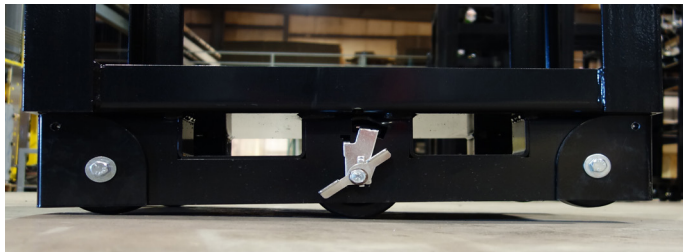
Weldcoa has two facilities in Aurora, IL. The manufacturing facility, located at 335 East Sullivan Road, is where we perform all our steel fabrication and welding, assembly, manifolds and lead production, cleaning and testing, main assembly, and inspection. The facility sits on five acres of land, has 38,500 SQFT under roof, and has several unique attributes, including:

- Robotic welders manufacture all of our pallets in order to guarantee the highest level of quality and consistency.
- Top-of-the line Metal Working, along with Cutting and Forming equipment to streamline our production.
- Weldcoa receives 1-2 truckloads of steel a day to keep up with the demand of our 24 hour production runs.
- Custom manufacturing and welding work cell stations
- A custom manifold brazing room
- A lead assembly area
- A testing and cleaning area
- Three 10 ton cranes
- 20% of our employees have been working with Weldcoa for over two decades, 3% of our employees have been with the company for over three decades.

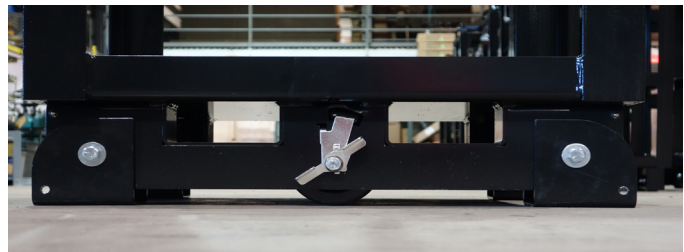


WOLF PACK 2-IN-1 SERIES

Designed to be utilized as a dual asset - quickly changing from a gas pack with wheels to a stand pad skid unit within seconds, no tools needed. The inline wheelbase provides a low center of gravity and durability as well as benefits gained from the easily maneuverable pivot design. Sturdy exterior frame comes with double clamps making this gas pack a long lasting investment. Compliant with DOT guidelines and Shell Off-Shore Specification OPS0055 Lifting and Hoisting Standards.



WHEELS WHEN YOU NEED THEM



STAND PADS WHEN YOU DON'T

GAME CHANGING 2-IN-1 DESIGN

- **Can be converted from a wheel based gas pack to a stand pad skid within seconds, no tools needed.**
- The outside wheels are higher than the center wheel, allowing the cart to easily be maneuvered and pivoted in multiple directions and also can go over uneven surfaces or cracks in the ground with ease.
- Durable, industrial ball bearings allow the wheels to rotate freely and smoothly.

HIGH QUALITY PRODUCT MADE IN-HOUSE

- Standard cart design includes a preformed, lasered "A" size base accommodating 8.75" to 9.5" OD cylinders.
- Specifically designed to utilize size "T" 300 CU.FT. cylinders. An extension kit is an available option for size "K" 200 CU. FT. cylinders.
- Entire cart frame is professionally powder-coated to protect from wear, corrosion, impact, and weather.
- Galvanizing is an available option for high corrosive environments.
- Made in the USA



12 Cylinder Gas Pack
Part Number LCW12-AIP



Compliant with DOT Guidelines
Compliant with Shell Specification OPS0055 Lifting and Hoisting Standards



Inline Wheel Base | High Maneuverability | Made in the USA



6 Cylinder Gas Pack
Part Number LCW06-AIP

OVERHEAD CAPABILITIES

- 8-Way Forklift Accessible. Can also be moved by crane.
- The lasered cut and press brake formed hood on the top of the gas pack provides overhead protection to the cylinders, leads, valves and manifolds from either a crane or a forklift during transit.
- 4-Point crane lifting eyes, with an additional single point lifting eye, are incorporated into the frame

DETAILS THAT MAKE A DIFFERENCE

- Sturdy exterior frame with double cylinder clamp design made specifically to reduce potential cylinder rotation, stress and/or vibration inflicted onto the leads attached to the cylinders in the carts during transit.
- Comes standard with Double Cylinder Clamps and Industrial Brakes
- 4-Way forklift accessible from the bottom



Close-up of the double cylinder
clamping system

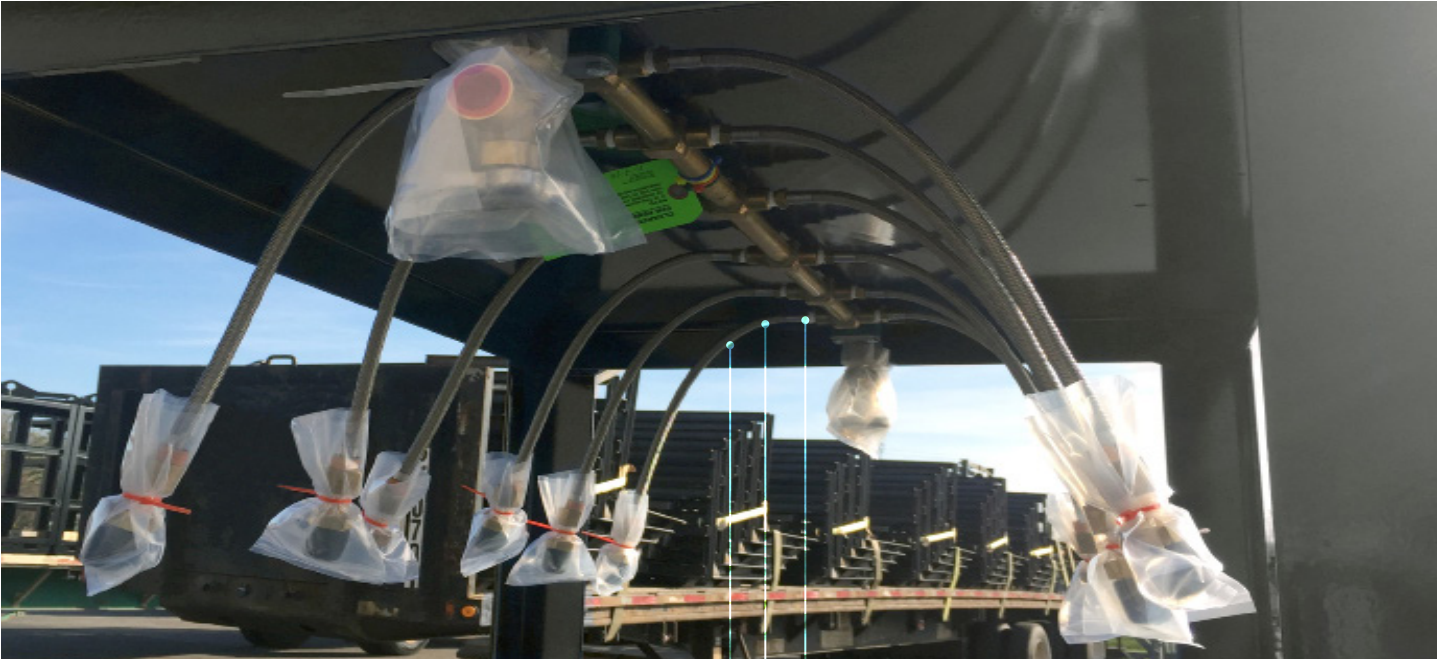
	Item #	Description
Cart Only	LCW06-AIP	Wolf Pack 2-in-1 Series, 6 Cylinder, A Base, Phenolic In-Line Wheels (with brake system) and Drop Down Stand Pads. IN-STOCK ITEM
	LCW12-AIP	Wolf Pack 2-in-1 Series, 12 Cylinder, A Base, Phenolic In-Line Wheels (with brake system) and Drop Down Stand Pads. IN-STOCK ITEM
Popular Manifold Options	LW06B-FDBP-B540	Wolf Pack Manifold, 6 Cylinder Brass Header, Flexible Double Braided Post-Sintered Teflon Lined Leads MAWP 3,600 PSI, CGA 540, with Standard Valve. IN-STOCK ITEM
	LW06B-FDBP-B580	Wolf Pack Manifold, 6 Cylinder Brass Header, Flexible Double Braided Post-Sintered Teflon Lined Leads MAWP 3,600 PSI, CGA 580, with Standard Valve. IN-STOCK ITEM
	LW12B-FDBP-B540	Wolf Pack Manifold, 12 Cylinder Brass Header, Flexible Double Braided Post-Sintered Teflon Lined Leads MAWP 3,600 PSI, CGA 540, with Standard Valve. IN-STOCK ITEM
	LW12B-FDBP-B580	Wolf Pack Manifold, 12 Cylinder Brass Header, Flexible Double Braided Post-Sintered Teflon Lined Leads MAWP 3,600 PSI, CGA 580, with Standard Valve. IN-STOCK ITEM

Available in both 6 and 12 cylinder models. Cart and manifold sold separately.
All manifold and lead options are list on page 6-7.

MANIFOLDS AND LEADS

MANIFOLDS FOR OUR WOLF PACK 2-IN-1 SERIES

Weldcoa proudly designs, manufactures, assembles, cleans and tests a wide variety of manifolds and leads (pigtails) in-house. Many gas distributors count on us to provide in stock service to replace their aging equipment and have made Weldcoa their preferred vendor due to the unwavering quality of our equipment.

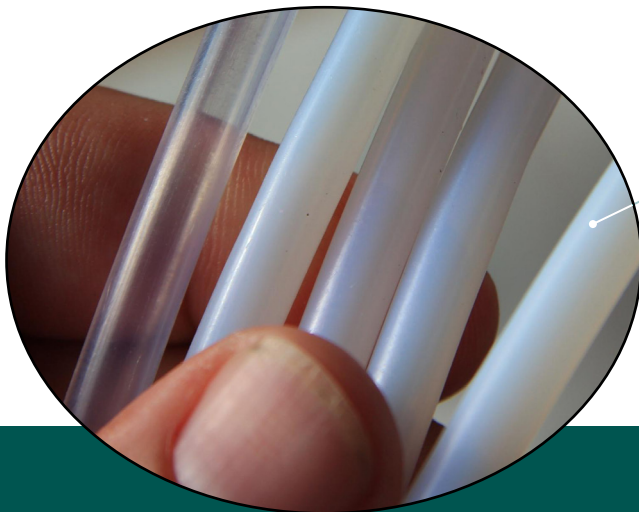


HIGH QUALITY PRODUCT MADE IN-HOUSE

- Each Weldcoa assembly is 100% hydrostatically pressure tested to 1.5 times the MAWP and then 100% nitrogen leak tested.
- Following pressure test, each assembly is 100% oxygen cleaned, dried, and bagged to meet CGA 4.1 requirements.

MEETS CGA E-9 SECTION 4.1.6 EFFUSION REQUIREMENTS

MINIMUM BURST IS FOUR TIMES MAXIMUM ALLOWABLE WORKING PRESSURE



DETAILS THAT MAKE A DIFFERENCE

- All of Weldcoa's non-metallic lined flexible leads are manufactured using a true PTFE post-sintered innercore.
- Weldcoa's proprietary post-sintering process follows aerospace techniques which **provides the lowest possible effusion rate**, the highest flex life and the widest temperature range of any fluoropolymer available.



	Item #	Description
Wolf Pack 6 cyl Manifold Options	LW06B-FDBP-B540	Wolf Pack Manifold, 6 Cylinder Brass Header, Flexible Double Braided Post-Sintered Teflon Lined Leads MAWP 3,600 PSI, CGA 540, with Standard Valve. IN-STOCK ITEM
	LW06B-FDBP-B580	Wolf Pack Manifold, 6 Cylinder Brass Header, Flexible Double Braided Post-Sintered Teflon Lined Leads MAWP 3,600 PSI, CGA 580, with Standard Valve. IN-STOCK ITEM
	LW06B-FDBP-B590	Wolf Pack Manifold, 6 Cylinder Brass Header, Flexible Double Braided Post-Sintered Teflon Lined Leads MAWP 3,600 PSI, CGA 590, with Standard Valve.
	LW06B-SSBP-B580	Wolf Pack Manifold, 6 Cylinder Brass Header, Rigid Stainless Steel Leads, CGA 580, with Standard Valve. IN-STOCK ITEM
	LW06B-SSBP-B350	Wolf Pack Manifold, 6 Cylinder Brass Header, Rigid Stainless Steel Leads, CGA 350, with Standard Valve.
	LW06B-MLBP-B540	Wolf Pack Manifold, 6 Cylinder Brass Header, Rigid Monel Leads, CGA 540, with Standard Valve.
Wolf Pack 12 cyl Manifold Options	LW12B-FDBP-B540	Wolf Pack Manifold, 12 Cylinder Brass Header, Flexible Double Braided Post-Sintered Teflon Lined Leads MAWP 3,600 PSI, CGA 540, with Standard Valve. IN-STOCK ITEM
	LW12B-FDBP-B580	Wolf Pack Manifold, 12 Cylinder Brass Header, Flexible Double Braided Post-Sintered Teflon Lined Leads MAWP 3,600 PSI, CGA 580, with Standard Valve. IN-STOCK ITEM
	LW12B-FDBP-B590	Wolf Pack Manifold, 12 Cylinder Brass Header, Flexible Double Braided Post-Sintered Teflon Lined Leads MAWP 3,600 PSI, CGA 590, with Standard Valve.
	LW12B-SSBP-B580	Wolf Pack Manifold, 12 Cylinder Brass Header, Rigid Stainless Steel Leads, CGA 580, with Standard Valve. IN-STOCK ITEM
	LW12B-SSBP-B350	Wolf Pack Manifold, 12 Cylinder Brass Header, Rigid Stainless Steel Leads, CGA 350, with Standard Valve.
	LW12B-MLBP-B540	Wolf Pack Manifold, 12 Cylinder Brass Header, Rigid Monel Leads, CGA 540, with Standard Valve.
Replacement Lead Options	FBAXX-15-BXX	15" Flexible Lead, MAWP 3,600 PSI, 1/4" Post-Sintered Teflon Innercore, Double Braided Stainless Steel, Brass 1/4" MNPT, Brass 1/4" FNPT. IN-STOCK ITEM
	FBAXX-18-BXX	18" Flexible Lead, MAWP 3,600 PSI, 1/4" Post-Sintered Teflon Innercore, Double Braided Stainless Steel, Brass 1/4" MNPT, Brass 1/4" FNPT. IN-STOCK ITEM
Extension Kit	LCWXX-EXT_KIT	Manifold Extension Kit for Wolf Pack Carts. Includes a spacer to offset manifold down for "K" or "200" size cylinders. Can be used on a 6 or 12 cylinder gas pack.

NEW WOLF PACK SKID BASE SERIES

Designed specifically with a forklift and pallet jackable skid base for those who want to avoid gas packs with wheels. Sturdy exterior frame comes with double clamps making this gas pack a long lasting investment. Compliant with DOT guidelines.

NEW PRODUCT



NEW DESIGN DUE TO CUSTOMER DEMAND

- **No Wheels - Skid Base is both forklift and pallet jackable**
- Laser cut and press brake formed base and structure provides a consistent, durable, long lasting product that you can depend on.

HIGH QUALITY PRODUCT MADE IN-HOUSE

- Standard cart design includes a preformed, lasered "A" size base accommodating 9" to 9.625" OD cylinders.
- Specifically designed to utilize size "T" 300 CU.FT. cylinders. An extension kit is an available option for size "K" 200 CU. FT. cylinders.
- Entire cart frame is professionally powder coated to protect from wear, corrosion, impact, and weather.
- Galvanizing is an available option for high corrosive environments.
- Made in the USA



16 Cylinder Gas Pack
with a Stainless Steel Manifold
and Rigid Leads



Compliant with DOT Guidelines



Forklift and Pallet Jackable Base | High Maneuverability | Made in the USA



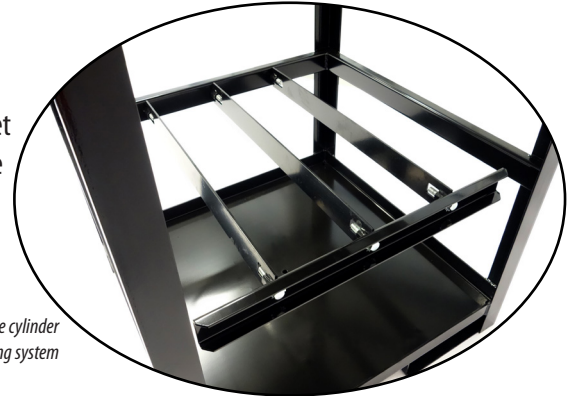
16 Cylinder Gas Pack
Part Number LCW16-APJ

OVERHEAD CAPABILITIES

- 8-Way forklift accessible. Can also be moved by crane.
- The lasered cut and press brake formed hood on the top of the gas pack provides overhead protection to the cylinders, leads, valves and manifolds from either a crane or a forklift during transit.
- 4-Point crane lifting eyes, with an additional single point lifting eye, are incorporated into the frame

DETAILS THAT MAKE A DIFFERENCE

- Sturdy exterior frame with double cylinder clamp design made specifically to reduce potential cylinder rotation, stress and/or vibration inflicted onto the leads attached to the cylinders in the carts during transit.
- 4-Way forklift and pallet jack accessible from the bottom



Close-up of the double cylinder clamping system

	Item #	Description
Cart	LCW16-APJ	Wolf Pack Skid Base Series, 16 Cylinder, A Sized Skid Base with No Wheels. Designed to be easily transported with a Pallet Jack, Fork Truck or Crane. Color: Black
	LW16B-FDBP-B540	Wolf Pack Manifold, 16 Cylinder Brass Header, Flexible Double Braided Post-Sintered Teflon Lined Leads MAWP 3,600 PSI, CGA 540, with Standard Valve.
Popular Manifold Options	LW16B-FDBP-B580	Wolf Pack Manifold, 16 Cylinder Brass Header, Flexible Double Braided Post-Sintered Teflon Lined Leads MAWP 3,600 PSI, CGA 580, with Standard Valve.
	LW16B-FDBP-B590	Wolf Pack Manifold, 16 Cylinder Brass Header, Flexible Double Braided Post-Sintered Teflon Lined Leads MAWP 3,600 PSI, CGA 590, with Standard Valve.
	LW16B-SSBP-B580	Wolf Pack Manifold, 16 Cylinder Brass Header, Rigid Stainless Steel Leads, CGA 580, with Standard Valve.
	LW16S-SSBP-B680	Wolf Pack Manifold, 16 Cylinder Stainless Steel Header, Rigid Stainless Steel Leads, CGA 680, with Standard Valve.

Additional Manifold and Lead (Pigtail) Options Are Listed in Price List including options with RPV Valves.

LOWPRO M1 IN-LINE SERIES

Designed with an inline wheelbase, providing high maneuverability and safety precautions similar to the pivoting lumber carts you see at a hardware store. Added traction, weight distribution, low center of gravity and durability are also benefits gained from the inline pivot design. Compliant with DOT guidelines.



IN-LINE PIVOT DESIGN

- The outside wheels are higher than the center wheel, allowing the cart to easily be maneuvered and pivoted in multiple directions and also can go over uneven surfaces or cracks in the ground with ease.
- Durable, industrial ball bearings allow the wheels to rotate freely and smoothly.

HIGH QUALITY PRODUCT MADE IN-HOUSE

- Standard cart design includes a preformed, lasered "A" size base accommodating 8.75" to 9.5" OD cylinders. "B", "C" and "D" size bases are available upon request for larger OD cylinder needs.
- Entire cart frame is professionally powder coated to protect from wear, corrosion, impact, and weather.
- Galvanizing is an available option for high corrosive environments.
- Additional options such as D-Rings, Roll Bar, Baffles, Secondary Clamp and Steering Handles are also available upon request.
- Made in the USA



12 Cylinder Gas Pack with a Brass Header Manifold and Rigid Leads



Compliant with DOT Guidelines



6 Cylinder Gas Pack
Part Number LCS06W-AIP

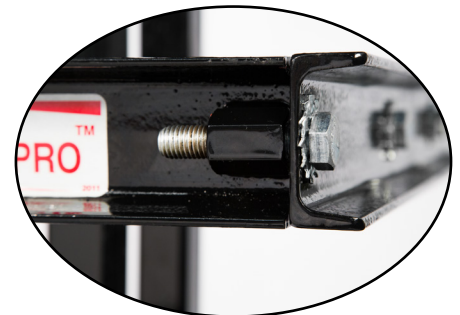
Inline Wheel Base | High Maneuverability | Made in the USA

OVERHEAD PROTECTION

- The lasered cut and press brake formed hood on the top of the cart provides overhead protection to the cylinder, leads, valves and manifolds from either a crane or a forklift during transit.
- A crane lifting eye is incorporated into the upright structural tubing

DETAILS THAT MAKE A DIFFERENCE

- Sturdy exterior frame with cylinder clamp design made specifically to reduce potential cylinder rotation, stress and/or vibration inflicted onto the leads attached to the cylinders in the carts during transit.
- Adjustable manifold bracket can be positioned up or down accommodating different cylinder heights and has also been redesigned to universally accommodate most Weldcoa manifolds including Block, Brass, Stainless Steel and Monel 400 models with Rigid or Flexible Leads.



Rule of thumb... "If the cylinders load easy... they also come out easy."

Close-up of durable, secure clamping system that is standard on all LowPro Gas Packs

	Item #	Description
Carts Only	LCS06W-AIP	LowPro M1 In-Line Series, 6 Cylinder, A Base, Phenolic In-Line Wheels with an Industrial Brake. IN-STOCK ITEM
	LCS12W-AIP	LowPro M1 In-Line Series, 12 Cylinder, A Base, Phenolic In-Line Wheels with an Industrial Brake. IN-STOCK ITEM
Popular Manifold Options	LM06B-CPBP-B540	LowPro Series Manifold, 6 Cylinder Brass Header, Rigid Copper Leads, CGA 540, with Standard Valve. IN-STOCK ITEM
	LM06B-CPBP-B580	LowPro Series Manifold, 6 Cylinder Brass Header, Rigid Copper Leads, CGA 580, with Standard Valve. IN-STOCK ITEM
	LM12B-CPBP-B540	LowPro Series Manifold, 12 Cylinder Brass Header, Rigid Copper Leads, CGA 540, with Standard Valve. IN-STOCK ITEM
	LM12B-CPBP-B580	LowPro Series Manifold, 12 Cylinder Brass Header, Rigid Copper Leads, CGA 580, with Standard Valve. IN-STOCK ITEM

*Available in both a 6 and 12 cylinder model. Cart and manifold sold separately.
All manifold and lead options are list on page 18-21*

LOWPRO CLASSIC SERIES

Designed specifically to be long lasting and durable, the LowPro Classic model has been a reliable pack for the gas industry for decades. The LowPro Gas Pack is easy and simple to maneuver and is compliant with DOT guidelines.



PROVEN, DURABLE CART THAT LAST FOR YEARS

- Comes standard with four phenolic wheels (two fixed and two rotating), allowing the cart to easily be maneuvered and pivoted in multiple directions with ease.
- Industrial brakes are available upon request.
- Heavy-duty forklift pockets come standard on 12 cylinder models.

HIGH QUALITY PRODUCT MADE IN-HOUSE

- Standard cart design includes a preformed, lasered "A" size base accommodating 8.75" to 9.5" OD cylinders. "B", "C" and "D" size bases are available upon request for larger OD cylinder needs.
- Entire cart frame is professionally powder coated to protect from wear, corrosion, impact, and weather.
- Galvanizing is an available option for high corrosive environments.
- Additional options such as D-Rings, Roll Bar, Baffles, Secondary Clamp, Stand Pads, Brakes and Steering Handles are also available upon request.
- Made in the USA



12 Cylinder Gas Pack
with a Brass Header Manifold
and Flexible Leads



Compliant with DOT Guidelines



Durable and Long Lasting | High Maneuverability | Made in the USA



6 Cylinder Gas Pack
Part Number LCS06W-APC

OVERHEAD PROTECTION

- The lasered cut and press brake formed hood on the top of the cart provides overhead protection to the cylinder, leads, valves and manifolds from either a crane or a forklift during transit.
- A crane lifting eye is incorporated into the upright structural tubing

DETAILS THAT MAKE A DIFFERENCE

- Sturdy exterior frame with cylinder clamp design made specifically to reduce potential cylinder rotation, stress and/or vibration inflicted onto the leads attached to the cylinders in the carts during transit.
- Adjustable manifold bracket can be positioned up or down accommodating different cylinder heights and has also been redesigned to universally accommodate most Weldcoa manifolds including Block, Brass, Stainless Steel and Monel 400 models with Rigid or Flexible Leads.



Close-up of the durable, industrial brake system available on all LowPro Classic Gas Packs

	Item #	Description
	LCS06W-APB	LowPro Classic Series, 6 Cylinder, A Base, Phenolic Wheels with an Industrial Brake. IN-STOCK ITEM
Carts Only	LCS06W-APC	LowPro Classic Series, 6 Cylinder, A Base, Phenolic Wheels IN-STOCK ITEM
	LCS12W-APB	LowPro Classic Series, 12 Cylinder, A Base, Phenolic Wheels with an Industrial Brake. IN-STOCK ITEM
	LCS06W-APC	LowPro Classic Series, 12 Cylinder, A Base, Phenolic Wheels IN-STOCK ITEM

Available in both 6 and 12 cylinder models. Cart and manifold sold separately.
All manifold and lead options are list on page 18-21

LOWPRO M2 SKID BASE SERIES

Designed specifically with a forklift and pallet jackable skid base for those who want to avoid gas packs with wheels. Sturdy frame and base is lasered cut and press brake formed making this gas pack a long lasting investment. Compliant with DOT guidelines.

HIGH QUALITY PRODUCT

- Standard cart design includes a preformed, lasered "A" size base accommodating 8.75" to 9.5" OD cylinders.
- "B", "C" and "D" size bases are available upon request for larger OD cylinder needs.
- Additional options such as D-Rings and a Secondary Clamp are also available upon request.
- Entire cart frame is professionally powder coated to protect from wear, corrosion, impact, and weather.
- Galvanizing is an available option for high corrosive environments.
- Made in the USA

NEW PRODUCT



**SAME, PROVEN LOWPRO GAS PACK DESIGN,
NOW WITH A NEW BASE OPTION**

**4-WAY FORKLIFT AND PALLET JACK
ACCESSIBLE FROM THE BOTTOM**



Compliant with DOT Guidelines



Durable and Long Lasting | High Maneuverability | Made in the USA

OVERHEAD PROTECTION

- The lasered cut and press brake formed hood on the top of the cart provides overhead protection to the cylinder, leads, valves and manifolds from either a crane or a forklift during transit.
- A crane lifting eye is incorporated into the upright structural tubing

DETAILS THAT MAKE A DIFFERENCE

- Sturdy exterior frame with cylinder clamp design made specifically to reduce potential cylinder rotation, stress and/or vibration inflicted onto the leads attached to the cylinders in the carts during transit.
- Adjustable manifold bracket can be positioned up or down accommodating different cylinder heights and has also been redesigned to universally accommodate most Weldcoa manifolds including Block, Brass, Stainless Steel and Monel 400 models with Rigid or Flexible Leads.



12 Cylinder Gas Pack
Part Number LCS12W-APJ



Close-up of Weldcoa's
cylinder clamping system

	Item #	Description
Carts Only	LCS06W-APJ	LowPro M2 Series, 6 Cylinder, A Sized Skid Base with No Wheels. Designed to be easily transported with a Pallet Jack, Fork Truck or Crane. Color: Black
	LCS12W-APJ	LowPro M2 Series, 12 Cylinder, A Sized Skid Base with No Wheels. Designed to be easily transported with a Pallet Jack, Fork Truck or Crane. Color: Black

Available in both a 6 and 12 cylinder model. Cart and manifold sold separately.
All manifold and lead options are list on page 18-21.

LOWPRO SIDE LOADING OPTIONS

Easy to load, unload and transport manifolded cylinders of liquefied compressed gases. Designed to travel through doorways and standard size elevators. Can be pushed by hand or lifted with a crane or fork truck. Cart is available with manifold bracket (for manifolding cylinders together) or without a manifold (strictly for FEMA transport). Compliant with DOT guidelines.



Part Number TCA06-APB-JG
Specially Designed FEMA Transport Cart.
This is a non-manifold unit

EASY TO LOAD AND UNLOAD

- 1.5" ground clearance with a ramp makes unloading and loading quick and easy
- **Designed to travel through doorways and standard size elevators.**
- Comes with steering handles for easy maneuvering
- Side braces allow unit to be bound flat to a side of a stake body truck
- Two sets of 2" wide ratchet handle binder straps are provided

HIGH QUALITY, MADE IN-HOUSE

- Standard cart design includes a preformed, lasered "A" size base accommodating 8.75" to 9.5" OD cylinders.
- Entire cart frame is professionally powder coated to protect from wear, corrosion, impact, and weather.
- Galvanizing is an available option upon request.
- Additional options such as D-Rings and Brakes on Swivels are also available upon request.



Part Number LCA06W-APB with a Brass Header Manifold and Rigid Copper Leads. Specially designed for easy loading/unloading and manifolding cylinders together.

	Item #	Description
Carts Only	TCA06-APB-JG	LowPro FEMA Transport Model, 6 Cylinder, A Base, Phenolic Wheels with Brake. This is designed strictly for FEMA transport. This cart does not come, nor compatible, with a manifold. Comes in Green.
	LCA06W-APB	LowPro Side Loading Model, 6 Cylinder, A Base, Phenolic Wheels with Brake. This is designed for manifolding cylinders together. Manifold options are listed below. Comes in Black.
Manifold Options	LM06B-CPBP-B540	LowPro Series Manifold, 6 Cylinder Brass Header, Rigid Copper Leads, CGA 540, with Standard Valve. IN-STOCK ITEM
	LM06B-CPBP-B580	LowPro Series Manifold, 6 Cylinder Brass Header, Rigid Copper Leads, CGA 580, with Standard Valve. IN-STOCK ITEM
	LM06B-FDBP-B540	LowPro Series Manifold, 6 Cylinder Brass Header, Flexible Double Braided Post-Sintered Teflon Lined Leads MAWP 3,600 PSI, CGA 540, with Standard Valve. IN-STOCK ITEM
	LM06B-FDBP-B580	LowPro Series Manifold, 6 Cylinder Brass Header, Flexible Double Braided Post-Sintered Teflon Lined Leads MAWP 3,600 PSI, CGA 580, with Standard Valve. IN-STOCK ITEM



LOWPRO ALTERNATIVE OPTIONS



LOWPRO ULTRA

The LowPro Ultra is designed with a wider base providing a very low center of gravity and shortened overall height. From top to bottom, the cart is only 6' 1/4" tall. **This is a good solution for those who want greater stability during transit.** Compliant with DOT guidelines.

- Standard cart design includes a preformed, lasered "A" size base accommodating 8.75" to 9.5" OD cylinders. "B," "C" and "D" size bases are available upon request for larger OD cylinder needs.
- Adjustable manifold bracket can be positioned up or down accommodating different cylinder heights
- Entire cart frame is professionally powder coated to protect from wear, corrosion, impact and weather
- Additional options such as D-Rings, Roll Bar, Baffles, Secondary Clamp, Galvanizing, Steering Handles and Brakes on Swivels are also available upon request.
- Can be fork lifted, craned or rolled.



LOWPRO GAS PACK FOR ACETYLENE

Easy to load, unload and transport 12" acetylene cylinders. Designed with a low center of gravity, providing greater balance and durability. Cart is available with a (4) cylinder carbon steel manifold option. Compliant with DOT guidelines.

- Side loading design for easy loading and unloading capabilities.
- Comes standard with steering handles for easy maneuvering.
- Entire cart frame is professionally powder coated to protect from corrosion, impact, and weather.
- Additional options such as D-Rings, Galvanizing and Brakes are also available upon request.
- Can be fork lifted, craned or rolled.

Ultra Cart Options

Item #	Description
LCU06-APC	LowPro Ultra Model, 6 Cylinder, A Base (8.75" - 9.5"), Phenolic Wheels with Brake. Cart Only. <i>Manifold and Lead (Pigtail) Options Are Listed on Pages 18-21</i>
LCU06-BPC	LowPro Ultra Model, 6 Cylinder, B Base (9.5" - 10"), Phenolic Wheels with Brake. Cart Only. <i>Manifold and Lead (Pigtail) Options Are Listed on Page 18-21</i>
LCU06-CPC	LowPro Ultra Model, 6 Cylinder, C Base (10" - 10.5"), Phenolic Wheels with Brake. Cart Only. <i>Manifold and Lead (Pigtail) Options Are Listed on Pages 18-21</i>
LCU06-DPC	LowPro Ultra Model, 6 Cylinder, D Base (10.5" - 11"), Phenolic Wheels with Brake. Cart Only. <i>Manifold and Lead (Pigtail) Options Are Listed on Pages 18-21</i>

Acetylene Cart Options

LCA04-DPC	LowPro Acetylene Model, 4 Cylinder (12" Acetylene), Phenolic Wheels with Brake. Cart Only.
LM04C-FSBP-B510-ACT	LowPro Acetylene Manifold, 4 Cylinder Carbon Steel Header, Flexible Single Braid Post-Sintered Teflon Lined Leads MAWP 3,000 PSI. Includes individual lead flash arrestors and check valves w/ hand tight.

MANIFOLDS AND LEADS

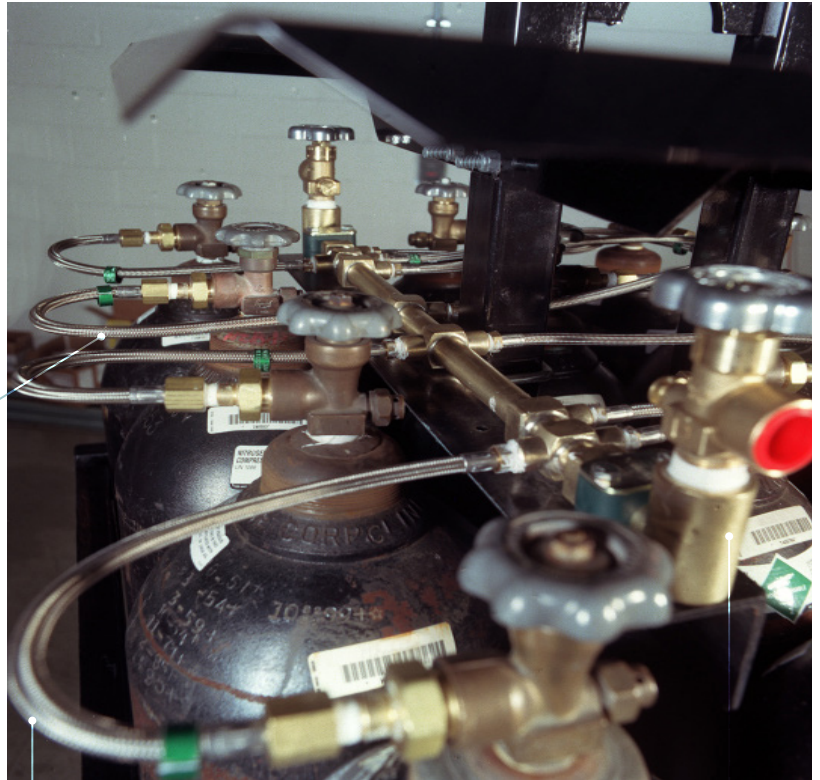
STANDARD MANIFOLDS FOR LOWPRO SERIES

Weldcoa proudly designs, manufactures, assembles, cleans and tests a wide variety of manifolds and leads (pigtails) in-house. Many gas distributors count on us to provide in stock service to replace their aging equipment and have made Weldcoa their preferred vendor due to the unwavering quality of our equipment.

HIGH QUALITY PRODUCT MADE IN-HOUSE

- Each Weldcoa assembly is 100% hydrostatically pressure tested to 1.5 times the MAWP and then 100% nitrogen leak tested.
- Following pressure test, each assembly is 100% oxygen cleaned, dried, and bagged to meet CGA 4.1 requirements.

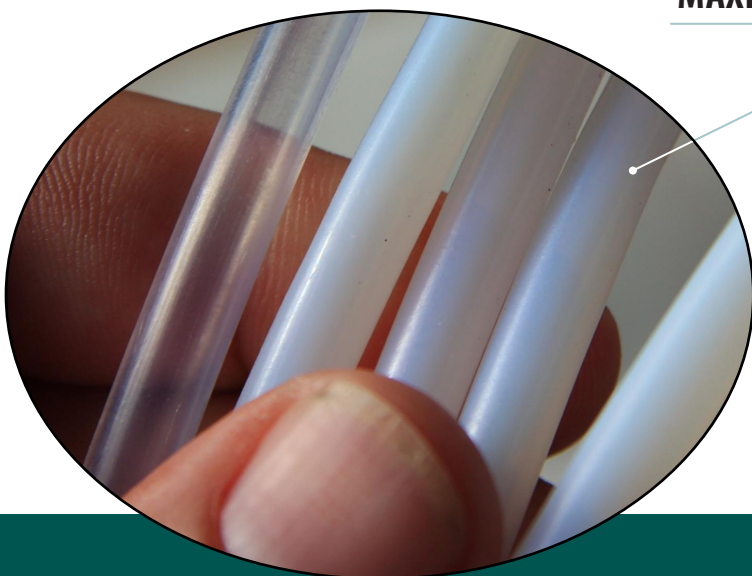
MEETS CGA E-9 SECTION 4.1.6 EFFUSION REQUIREMENTS



MINIMUM BURST IS FOUR TIMES MAXIMUM ALLOWABLE WORKING PRESSURE

DETAILS THAT MAKE A DIFFERENCE

- All of Weldcoa's non-metallic lined flexible leads are manufactured using a true PTFE post-sintered innercore.
- Weldcoa's proprietary post-sintering process follows aerospace techniques which **provides the lowest possible effusion rate**, the highest flex life and the widest temperature range of any fluoropolymer available.



	Item #	Description
LowPro 6cyl Manifold Options	LM06B-CPBP-B540	LowPro Manifold, 6 Cylinder Brass Header, Rigid Copper Leads, CGA 540, with Standard Valve. IN-STOCK ITEM
	LM06B-CPBP-B580	LowPro Manifold, 6 Cylinder Brass Header, Rigid Copper Leads, CGA 580, with Standard Valve. IN-STOCK ITEM
	LM06B-FDBP-B540	LowPro Manifold, 6 Cylinder Brass Header, Flexible Double Braided Post-Sintered Teflon Lined Leads MAWP 3,600 PSI, CGA 540, with Standard Valve. IN-STOCK ITEM
	LM06B-FDBP-B580	LowPro Manifold, 6 Cylinder Brass Header, Flexible Double Braided Post-Sintered Teflon Lined Leads MAWP 3,600 PSI, CGA 580, with Standard Valve. IN-STOCK ITEM
	LM06B-SSBP-B350	LowPro Manifold, 6 Cylinder Brass Header, Rigid Stainless Steel Leads, CGA 350, with Standard Valve.
	LM06B-SSBP-B580	LowPro Manifold, 6 Cylinder Brass Header, Rigid Stainless Steel Leads, CGA 580, with Standard Valve.
LowPro 12cyl Manifold Options	LM12B-CPBP-B540	LowPro Manifold, 12 Cylinder Brass Header, Rigid Copper Leads, CGA 540, with Standard Valve. IN-STOCK ITEM
	LM12B-CPBP-B580	LowPro Manifold, 12 Cylinder Brass Header, Rigid Copper Leads, CGA 580, with Standard Valve. IN-STOCK ITEM
	LM12B-FDBP-B540	LowPro Manifold, 12 Cylinder Brass Header, Flexible Double Braided Post-Sintered Teflon Lined Leads MAWP 3,600 PSI, CGA 540, with Standard Valve. IN-STOCK ITEM
	LM12B-FDBP-B580	LowPro Manifold, 12 Cylinder Brass Header, Flexible Double Braided Post-Sintered Teflon Lined Leads MAWP 3,600 PSI, CGA 580, with Standard Valve. IN-STOCK ITEM
	LM12B-SSBP-B350	LowPro Manifold, 12 Cylinder Brass Header, Rigid Stainless Steel Leads, CGA 350, with Standard Valve.
	LM12B-SSBP-B580	LowPro Manifold, 12 Cylinder Brass Header, Rigid Stainless Steel Leads, CGA 580, with Standard Valve.
Popular Replacement Lead (Pigtail) Options	FBAXX-10-BXX	10" Flexible Lead, MAWP 3,600 PSI, 1/4" Post-Sintered Teflon Innercore, Double Braided Stainless Steel, Brass 1/4" MNPT, Brass 1/4" FNPT.
	FBAXX-15-BXX	15" Flexible Lead, MAWP 3,600 PSI, 1/4" Post-Sintered Teflon Innercore, Double Braided Stainless Steel, Brass 1/4" MNPT, Brass 1/4" FNPT. IN-STOCK ITEM
	FBAXX-18-BXX	18" Flexible Lead, MAWP 3,600 PSI, 1/4" Post-Sintered Teflon Innercore, Double Braided Stainless Steel, Brass 1/4" MNPT, Brass 1/4" FNPT. IN-STOCK ITEM
	FBAXX-24-BXX	24" Flexible Lead, MAWP 3,600 PSI, 1/4" Post-Sintered Teflon Innercore, Double Braided Stainless Steel, Brass 1/4" MNPT, Brass 1/4" FNPT. IN-STOCK ITEM

MANIFOLDS AND LEADS

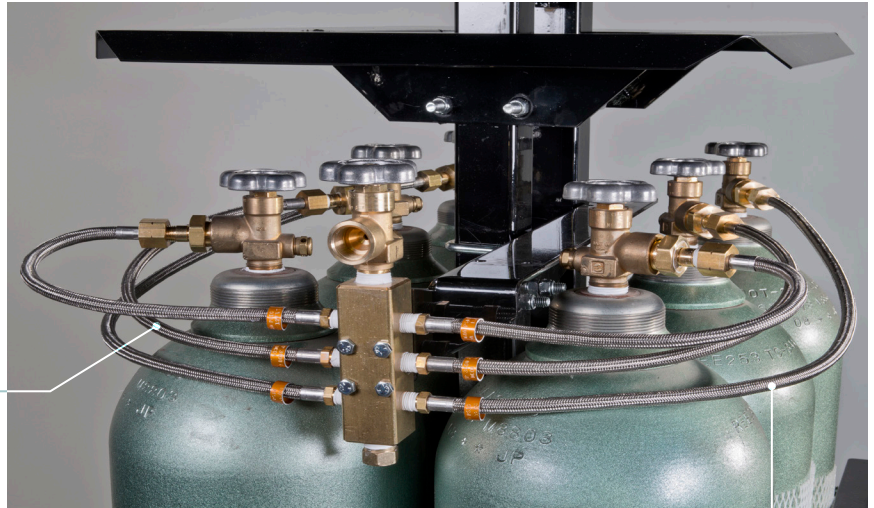
BLOCK MANIFOLDS FOR LOWPRO SERIES

Weldcoa proudly designs, manufactures, assembles, cleans and tests a wide variety of manifolds and leads (pigtailed) in-house. Many gas distributors count on us to provide in stock service to replace their aging equipment and have made Weldcoa their preferred vendor due to the unwavering quality of our equipment.

HIGH QUALITY PRODUCT MADE IN-HOUSE

- Each Weldcoa assembly is 100% hydrostatically pressure tested to 1.5 times the MAWP and then 100% nitrogen leak tested.
- Following pressure test, each assembly is 100% oxygen cleaned, dried, and bagged to meet CGA 4.1 requirements.

MEETS CGA E-9 SECTION 4.1.6 EFFUSION REQUIREMENTS

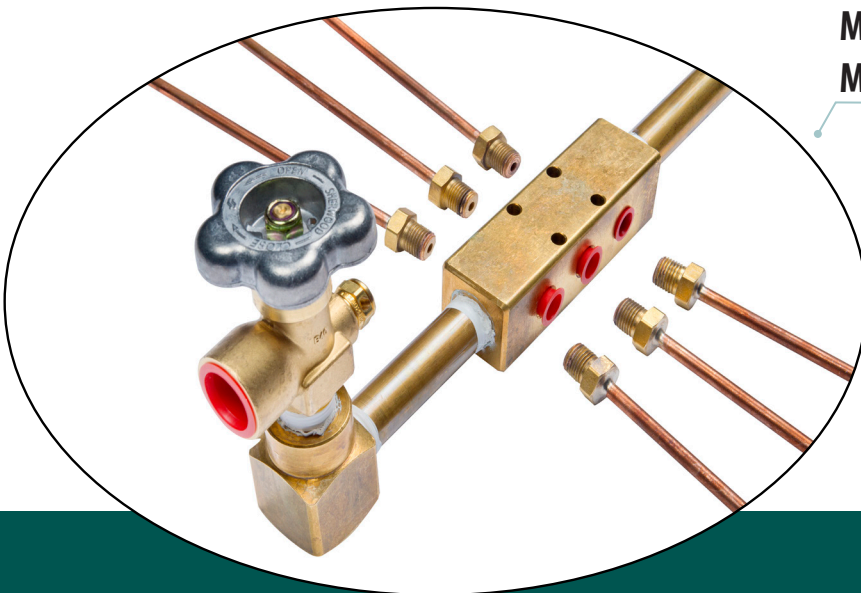


DETAILS THAT MAKE A DIFFERENCE

- All of Weldcoa's non-metallic lined flexible leads are manufactured using a true PTFE post-sintered innercore.
- Weldcoa's proprietary post-sintering process follows aerospace techniques which **provides the lowest possible effusion rate**, the highest flex life and the widest temperature range of any fluoropolymer available.

MINIMUM BURST IS FOUR TIMES MAXIMUM ALLOWABLE WORKING PRESSURE

REPLACING RIGID OR FLEX LEADS (PIGTAILS) IS QUICK AND EASY





	Item #	Description
LowPro 6cyl Manifold Options	BM06B-CPBP-B540	LowPro Manifold, 6 Cylinder Brass Block, Rigid Copper Leads, CGA 540, with Standard Valve.
	BM06B-CPBP-B580	LowPro Manifold, 6 Cylinder Brass Block, Rigid Copper Leads, CGA 580, with Standard Valve.
	BM06B-SSBP-B580	LowPro Manifold, 6 Cylinder Brass Block, Rigid Stainless Steel Leads, CGA 580, with Standard Valve.
	BM06B-FDBP-B540	LowPro Manifold, 6 Cylinder Brass Block, Flexible Double Braided Post-Sintered Teflon Lined Leads MAWP 3,600 PSI, CGA 540, with Standard Valve.
	BM06B-FDBP-B580	LowPro Manifold, 6 Cylinder Brass Block, Flexible Double Braided Post-Sintered Teflon Lined Leads MAWP 3,600 PSI, CGA 580, with Standard Valve.
	BM06B-FDBP-B590	LowPro Manifold, 6 Cylinder Brass Block, Flexible Double Braided Post-Sintered Teflon Lined Leads MAWP 3,600 PSI, CGA 590, with Standard Valve.
LowPro 12cyl Manifold Options	BM12B-CPBP-B540	LowPro Manifold, 12 Cylinder Brass Block, Rigid Copper Leads, CGA 540, with Standard Valve.
	BM12B-CPBP-B580	LowPro Manifold, 12 Cylinder Brass Block, Rigid Copper Leads, CGA 580, with Standard Valve.
	BM12B-SSBP-B580	LowPro Manifold, 12 Cylinder Brass Block, Rigid Stainless Steel Leads, CGA 580, with Standard Valve.
	BM12B-FDBP-B540	LowPro Manifold, 12 Cylinder Brass Block, Flexible Double Braided Post-Sintered Teflon Lined Leads MAWP 3,600 PSI, CGA 540, with Standard Valve.
	BM12B-FDBP-B580	LowPro Manifold, 12 Cylinder Brass Block, Flexible Double Braided Post-Sintered Teflon Lined Leads MAWP 3,600 PSI, CGA 580, with Standard Valve.
Popular Replacement Lead (Pigtail) Options	FBAXX-10-BXX	10" Flexible Lead, MAWP 3,600 PSI, 1/4" Post-Sintered Teflon Innercore, Double Braided Stainless Steel, Brass 1/4" MNPT, Brass 1/4" FNPT.
	FBAXX-15-BXX	15" Flexible Lead, MAWP 3,600 PSI, 1/4" Post-Sintered Teflon Innercore, Double Braided Stainless Steel, Brass 1/4" MNPT, Brass 1/4" FNPT. IN-STOCK ITEM
	FBAXX-18-BXX	18" Flexible Lead, MAWP 3,600 PSI, 1/4" Post-Sintered Teflon Innercore, Double Braided Stainless Steel, Brass 1/4" MNPT, Brass 1/4" FNPT. IN-STOCK ITEM
	FBAXX-24-BXX	24" Flexible Lead, MAWP 3,600 PSI, 1/4" Post-Sintered Teflon Innercore, Double Braided Stainless Steel, Brass 1/4" MNPT, Brass 1/4" FNPT. IN-STOCK ITEM

RPV VALVES AVAILABLE UPON REQUEST

CYLINDER GAS PACK

18 CYLINDER GAS PACK PALLET MANIFOLD

Terrific alternative to costly micro bulk delivery vehicles for safely delivering higher volumes of gas.

Originally the 18 cylinder pallet manifold was designed as a back up for cylinder banks (cradles, clusters, etc.) The idea being that a distributor could keep several pallet covers and manifolds in storage as they physically needed little space to store. When the need arose, the distributor could simply put the required cylinders on the pallet and slip the cover with manifold over them and Voila! Instant cylinder cluster. This option has now become a standard, rather than an alternative, to cylinder carts for many distributors around the country.

- Higher Volume of Delivered Gas
- Installs Quickly and Without Tools
- Mobile, Easily Moved With Fork Truck
- Made in the USA



DRASTICALLY IMPROVE EFFICIENCY

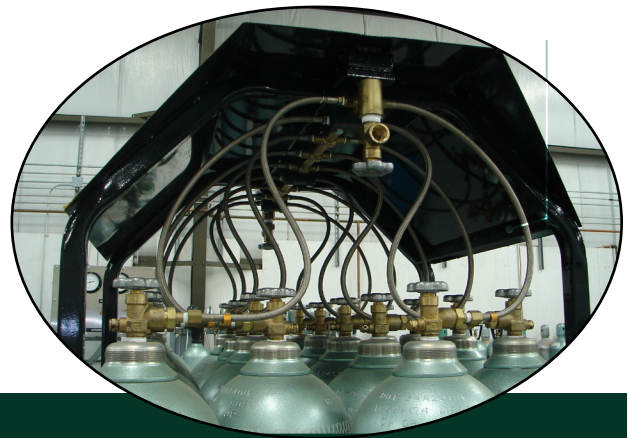
"By moving from individual cylinders to the clusters, we've saved our customers countless hours in labor for cylinder handling. The installations we've done allow the customer to no longer have to touch the cylinder. We deliver a new pallet, pick up the old one, and all the customer knows is that their gas supply is constant. As a result, they're more efficient, and we're more efficient. We don't have to move 18 separate cylinders—just the pallet. We're also more efficient in our plant. Filling is more efficient, cleaner and safer. And it's a nice-looking package." - David Mahoney, President of Noble Gas Solutions





HIGH QUALITY PRODUCT MADE IN-HOUSE

- Hood provides overhead protection to the cylinder, leads, valves and manifold during transit.
- **Made specifically with high gas volume end users in mind, the 18 pack is designed to utilize size "T" 300 CU.FT. cylinders.**
- Pallet and Cover is professionally powder coated to protect from wear, corrosion, impact, and weather.
- Every Weldcoa manifold assembly is 100% hydrostatically pressure tested to 1.5 times the MAWP, 100% nitrogen leak tested and 100% oxygen cleaned, dried, bagged to meet CGA 4.1 requirements.



Standard product comes in Black. Different color options available upon request.

THREE PRODUCTS MAKE UP OUR 18 CYLINDER GAS PACK

1. SUR-LOC 3-RAIL PALLET 2. THE COVER 3. MANIFOLD WITH LEADS

	Item #	Description
Pallet	IPSL3R-BTNS-2	3-Rail Weldcoa Sur-Loc™ Pallet, Professional Powder-Coated with Black Textured Non-Skid Paint. Supplied with (2) Binder Straps and Brackets. IN-STOCK ITEM
	PMBKT-18BK	18 Cylinder Pallet Bracket and Cover, Professional Powder-Coated Black. IN-STOCK ITEM
Manifold Options	PM18B-SSBPB580	Pallet Manifold, 18 Cylinder Brass Header, Rigid Stainless Steel Leads, CGA 580, with Standard Valve.
	PM18B-FDBPB540	Pallet Manifold, 18 Cylinder Brass Header, Flexible Double Braided Post-Sintered Teflon Lined Leads MAWP 3,600 PSI, CGA 540, with Standard Valve. IN-STOCK ITEM
	PM18B-FDBPB580	Pallet Manifold, 18 Cylinder Brass Header, Flexible Double Braided Post-Sintered Teflon Lined Leads MAWP 3,600 PSI, CGA 580, with Standard Valve. IN-STOCK ITEM



WELDCOA - CONSTANT INNOVATION

INQUIRE ABOUT OUR OTHER PRODUCTS:

- ✓ Pallets
- ✓ Storage Cages
- ✓ Pigtails / Leads and Manifolds
- ✓ Palletized Truck Bodies & Trailers
- ✓ Industrial Gas Fill Systems
- ✓ Industrial Gas Automation
- ✓ Specialty Gas Fill Systems
- ✓ Specialty Gas Automation
- ✓ Cryo Pump Protection and Automation
- ✓ Cryo Pump Install and Repair
- ✓ Welding B-Booms

WELDING COMPANY OF AMERICA

Weldcoa | 335 East Sullivan Road | Aurora, Illinois 60505
www.weldcoa.com

Phone: 630-806-2000 • Fax: 630-806-2001