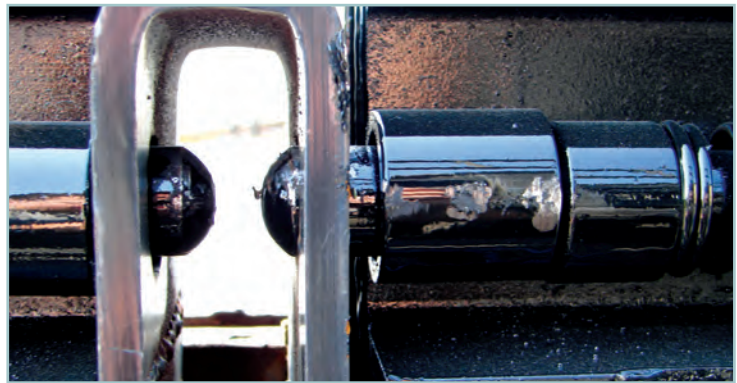


# CYLINDER PALLETS, TRUCK BODIES & TRAILERS

Product Catalog



phone (630) 806-2000 • [www.weldcoa.com](http://www.weldcoa.com)

*Weldcoa*

# TABLE OF CONTENTS

<b>Palletization</b>	<b>pg. 4</b>	<b>Stack-Loc™ Pallets</b>	
<b>Smart Body</b>	<b>pg. 5</b>	4-Rail Stack-Loc™ Pallet	pg. 10
<b>Sur-Loc™ Pallets</b>	<b>pg.6-9</b>	MC Acetylene Stack-Loc™ Pallet	pg. 11
Sur-Loc™ Style Options	pg. 6-7	B Acetylene Stack-Loc™ Pallet	pg. 12
Sur-Loc™ Pallets with Textured Paint	pg. 8	D & E Medical Stack-Loc™ Pallet	pg. 10
Sur-Loc™ Pallets with Standard Paint	pg. 9	<b>Pallet Manifold Options</b>	<b>pg. 16-17</b>
<b>Propane Sur-Loc™ Pallet Options</b>	<b>pg.14-15</b>	<b>Palletized Truck Bodies</b>	<b>pg. 18</b>
Propane Sur-Loc™ Pallet	pg. 14	<b>Palletized Trailers</b>	<b>pg. 19</b>
Propane Cage on Sur-Loc™ Pallet	pg. 15		

## WELDCOA IS A PROUD USA MANUFACTURER

Constantly Innovating Since 1968

Located in Aurora, IL, Weldcoa is an innovative manufacturer of products that store, transport, or fill compressed gas cylinders. Our exclusive, patented-filling, automation, storage and transportation solutions provide cost-reduction innovations for every step of your process, while providing unmatched levels of reliability and safety. From the most basic to the most demanding, we have the products that will support you and your customer's needs better than anyone in the high-pressure gas industry.

## OUR STORY

Founder Richard Bennett created Weldcoa to support his Gas & Welding Distributorship, Benster Welding, in 1968. We have been supporting the Cylinder Gas Industry ever since. Richard Bennett was not an engineer, he was an inventor. Weldcoa was his "Mad Scientist" shop where he experimented with America's very first Palletized Cylinder Transportation System. From there, Weldcoa has grown into an A to Z supplier of cylinder transportation, storage, and filling. Today Weldcoa's patented automated systems are considered the Global Leader in both Next- Step Technology and Long-Term Reliability. Weldcoa's patented Pallet System has grown into the most widely used system in North America.



WELDCOA FOUNDER RICHARD BENNETT AND PETE NEILSON





## WELDCOA - YOUR ON DEMAND, IN STOCK PROVIDER

Three years ago Weldcoa began a top to bottom overhaul of our entire manufacturing process. We invested in nearly \$2,000,000 worth of automated manufacturing technology and equipment. The goal was to improve our quality, provide you with better delivery time and to become something that we have never been, the low cost provider.

Today, we are an in stock provider that can ship within 48 hours of receiving your P.O. on all of our standard in-stock products. What's more, we believe that you're going to be blown away by our new aggressive pricing position. Weldcoa is now able to provide you with the highest quality of "Made in the USA" products, when you need them, at the best possible price.



### TEAM WELDCOA IS LIKE NONE OTHER

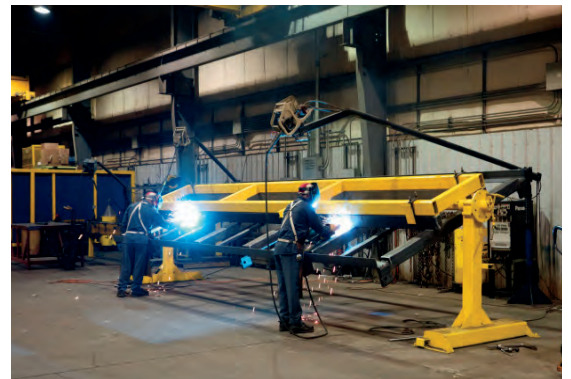
Weldcoa boasts an elite team of engineers, programmers and support staff who are heavily involved in every detail of our products from Research and Development to Installation and Start-up. Often, the team that designs your solutions is the very same team who installs and provides the long-term support for the equipment.

Everyone at Weldcoa is focused on providing you with the highest possible level of service and quality. Our products are built to your specification, carefully inspected, and always delivered on time and within budget.

### A TRUE MANUFACTURER

Weldcoa has two facilities in Aurora, IL. The manufacturing facility, located at 335 East Sullivan Road, is where we perform all our steel fabrication and welding, assembly, manifolds and lead production, cleaning and testing, main assembly, and inspection. The facility sits on five acres of land, has 38,500 SQ FT under roof, and has several unique attributes, including:

- Robotic welders manufacture all of our pallets in order to guarantee the highest level of quality and consistency.
- Top-of-the line Metal Working, along with Cutting and Forming equipment to streamline our production.
- Weldcoa receives 1-2 truckloads of steel a day to keep up with the demand of our 24 hour production runs.
- Custom manufacturing and welding work cell stations
- A custom manifold brazing room
- A lead assembly area
- A testing and cleaning area
- Three 10 ton cranes
- 20% of our employees have been working with Weldcoa for over two decades, 3% of our employees have been with the company for over three decades.



# PALLETIZATION

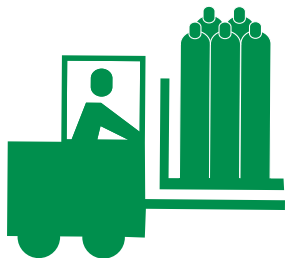


## TAKE ADVANTAGE OF A PALLETIZED PROCESS

Our exclusive, patented filling, storage and transportation solutions provide cost reduction innovations for every step of your process, while still providing unmatched levels of reliability and safety. Weldcoa's patented compressed gas cylinder transportation and securement system meets or exceeds all government-mandated requirements. Within the US our system is in compliance with 49 CFR 393.102 and 49 CFR 177.840.

### BENEFITS TO HAVING A PALLETIZED WELDCOA DELIVERY SYSTEM

- **Faster**
- **Safer**
- **More Cost Effective**



## LOADING AND UNLOADING OF VEHICLES IS GREATLY ACCELERATED.

### Example: 40 foot trailer - full of pallets

#### 2 Men By Hand

Unload with 2 Men 2 Hours

Reload with 2 Men 2 Hours

**Total Man Hours 8 Hours**

VS.

#### 1 Man & 1 Fork Truck

Unload pallets 15 minutes

Reload pallets 15 minutes

**Total 30 minutes**



# SMART BODY



**MEASURABLE  
TIME SAVINGS  
AT EVERY  
STOP**

## WELDCOA SMART BED TRUCK BODY

Make delivered faster and easier with a Weldcoa Smart Bed truck body. Cut your delivery time by 15%

### Liftgate Activity – Typical Truck Body



### TYPICAL TRUCK BODY DELIVERY PROCESS

Driver gets out of cab/Walks to back of truck/ Lowers Liftgate/ Rides up on Gate to access Truck Bed/ Chooses Cylinders required for delivery/ Lowers Cylinders down via liftgate/ Delivers Cylinders/ Returns to truck with empties/ Rides up liftgate with empties/ Secures empties/ Rides liftgate down/ Secures liftgate/ Walks around to cab/ Enters Cab and head to next delivery.

### Liftgate Activity – Weldcoa Smart Body



WELDCOA SMART BODY DESIGN REDUCES  
LIFTGATE USE BY OVER 50%

### WELDCOA SMART BODY DELIVERY PROCESS

Driver gets out of cab/Walks around to stairs behind cab/ Climbs up stairs and enters truck body through secure gate/ Chooses Cylinders required for delivery/ Lowers Cylinders down via liftgate/ Delivers Cylinders/ Returns to truck with empties/ Rides up liftgate with empties/ Secures empties/ Secures liftgate/ Walks out gate and down stairs and back into his cab/ Enters Cab and head to next delivery.

**FASTER DELIVERIES = MORE STOPS = GREATER \$\$\$\$**

# SUR-LOC PALLETS



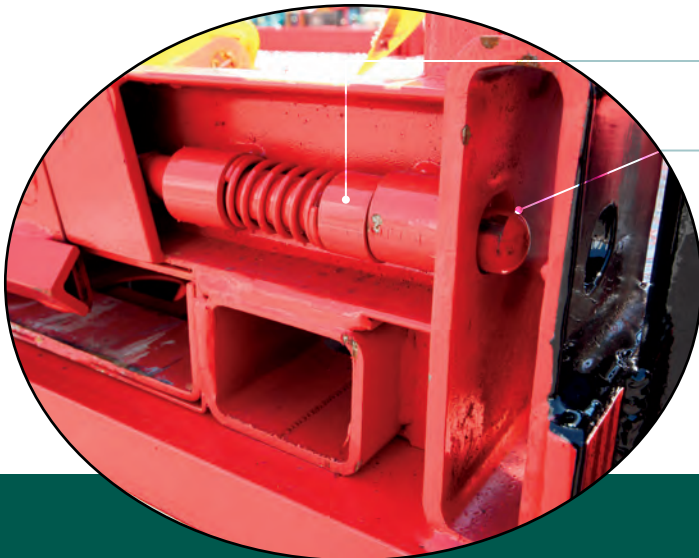
## SUR-LOC™ PALLET OPTIONS

Our Sur-Loc pallets are the strongest pallets in the industry. They are manufactured at Weldcoa's Aurora, IL USA facility by robotic welders to ensure precision. Weldcoa's patented Sur-Loc™ pallet system is one of the only systems that mechanically locks onto the transportation structure. If the entire truck/trailer structure rotated 180°, the pallets would remain locked onto the frame. Our locking system has evolved over the years and complies with Federal DOT regulations 49 CFR 393.102 & CFR 177.840.

## PATENT AND PROVEN 4-POINT LOCKING SYSTEM

### DETAILS THAT MAKE A DIFFERENCE

- All Weldcoa pallets have 4-way entry and are self-aligning when positioned into a pallet truck or trailer.
- The fork pockets are re-enforced to eliminate the possibility of broken plates
- Automatic Safety - Pallet truck forks automatically engage and disengage the mechanical locks.
- Visible Safety Check - Drivers and managers can clearly see if the locks are properly engaged.







All Sur-Loc™ Pallets are Compliant with DOT Guidelines



## HIGH QUALITY PRODUCT MADE IN HOUSE

- All of our pallets are manufactured on a robotic welders. The only aspect of the pallet that is done by hand are the internal components of the lock mechanism which are welded by Certified Welders. We manufacture a complete pallet every 12 minutes.
- Entire pallet is professionally powder-coated with black, textured, non-skid paint for added safety and to also protect from wear, corrosion, impact, and weather.
- Standard powder-coated paint is also available.
- Galvanizing is an available option for high corrosive environments.
- 100% Made in the USA

## STRUCTURAL CAPABILITIES

- Holds up to 21 "T" cylinders (18 cylinders are recommended in order to have a center aisle)
- The pallet deck can accommodate any standard 4' x 4' wood pallet and cargo
- The corners of the diamond plate deck have been blunted for improved safety
- 4-point pantent locking system
- The pallet base is structurally sound
- A grease reservoir that lubricates all of the moving parts every time the lock is actuated (We recommend using an anti-seize compound rather than grease to lubricate the pallet locks)



3-Rail Sur-Loc Pallet  
Part Number IPL3R-BTNS-2

*OUR LOCKING SYSTEM COMPLIES  
WITH FEDERAL DOT REGULATIONS  
49 CFR 393.102 & CFR 177.840*

## SEVERAL STYLE OPTIONS AVAILABLE:



- Standard Pallet with No Side Rails
- Most Popular Style
- Available in both 3-Rail and 4-Rail models



- Standard Pallet with 3/4 Side Rails
- Side rails provide added protection during loading and unloading at customer sites
- Available in both 3-Rail and 4-Rail models



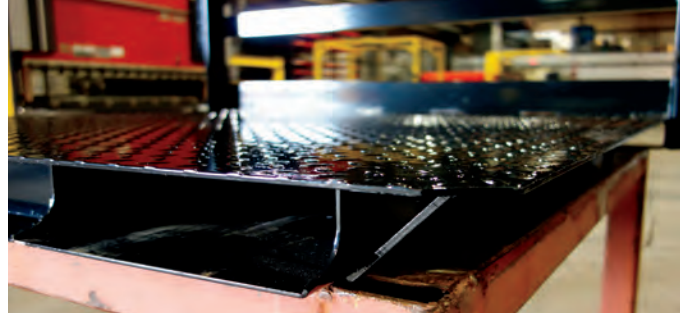
- Standard Pallet with Full Size Side Rails
- Side rails provide added protection during loading and unloading at customer sites
- Available in both 3-Rail and 4-Rail models

# SUR-LOC PALLETS

## TWO PAINT OPTIONS AVAILABLE



Professionally Powder-Coated with Textured Non-Skid Paint



Professionally Powder-Coated with Standard Paint

### Weldcoa Sur-Loc™ Pallets Professionally Powder-Coated with Textured Non-Skid Paint for Added Safety

Comes Standard in Black

		Item #	Description
with No Side Rails		IPSL3R-BTNS	Sur-Loc™ Pallet - 3 Rail, No Sides, Professionally Powder-Coated with Black Textured Non-Skid Paint Color: Black. <b>IN-STOCK ITEM</b>
		IPSL3R-BTNS-1	Sur-Loc™ Pallet - 3 Rail with (1) Strap and Bracket, No Sides, Professionally Powder-Coated with Black Textured Non-Skid Paint. Color: Black. <b>IN-STOCK ITEM</b>
		IPSL3R-BTNS-2	Sur-Loc™ Pallet - 3 Rail with (2) Straps and Brackets, No Sides, Professionally Powder-Coated with Black Textured Non-Skid Paint. Color: Black. <b>IN-STOCK ITEM</b>
		IPSL4R-BTNS	Sur-Loc™ Pallet - 4 Rail, No Sides, Professionally Powder-Coated with Black Textured Non-Skid Paint Color: Black. <b>IN-STOCK ITEM</b>
		IPSL4R-BTNS-1	Sur-Loc™ Pallet - 4 Rail with (1) Strap and Bracket, No Sides, Professionally Powder-Coated with Black Textured Non-Skid Paint. Color: Black. <b>IN-STOCK ITEM</b>
		IPSL4R-BTNS-2	Sur-Loc™ Pallet - 4 Rail with (2) Straps and Brackets, No Sides, Professionally Powder-Coated with Black Textured Non-Skid Paint. Color: Black. <b>IN-STOCK ITEM</b>
with Side Rails		IPSL3R-BT3S	Sur-Loc™ Pallet - 3 Rail with(2) 3/4 Side Rails, Professionally Powder-Coated with Black Textured Non-Skid Paint. Color: Black. <b>Lead Time: Approx. 2 weeks</b>
		IPSL3R-BT3F	Sur-Loc™ Pallet - 3 Rail with (2) Full Side Rails, Professionally Powder-Coated with Black Textured Non-Skid Paint. Color: Black. <b>Lead Time: Approx. 2 weeks</b>
		IPSL4R-BT3S	Sur-Loc™ Pallet - 4 Rail with(2) 3/4 Side Rails, Professionally Powder-Coated with Black Textured Non-Skid Paint. Color: Black. <b>Lead Time: Approx. 2 weeks</b>
		IPSL4R-BT3F	Sur-Loc™ Pallet - 4 Rail with (2) Full Side Rails, Professionally Powder-Coated with Black Textured Non-Skid Paint. Color: Black. <b>Lead Time: Approx. 2 weeks</b>





All Sur-Loc™ Pallets are Compliant with DOT Guidelines



### Weldcoa Sur-Loc™ Pallets Professionally Powder-Coated with Standard Paint *with No Side Rails*

Replace XX with Color Preference: Black (BK), Cardinal Red (CR), Safety Orange (SO), Weldcoa Blue (WB), Safety Yellow (SY), John Deere Green (JG)

Item #	Description
IPSL3R-XXNS	Sur-Loc™ Pallet - 3 Rail, No Sides, Professionally Powder-Coated with Standard Paint <b>Lead Time: Approx. 2 weeks</b>
IPSL3R-XXNS-1	Sur-Loc™ Pallet - 3 Rail with (1) Strap and Bracket, No Sides, Professionally Powder-Coated with Standard Paint. <b>Lead Time: Approx. 2 weeks</b>
IPSL3R-XXNS-2	Sur-Loc™ Pallet - 3 Rail with (2) Straps and Brackets, No Sides, Professionally Powder-Coated with Standard Paint. <b>Lead Time: Approx. 2 weeks</b>
IPSL4R-XXNS	Sur-Loc™ Pallet - 4 Rail, No Sides, Professionally Powder-Coated with Standard Paint <b>Lead Time: Approx. 2 weeks</b>
IPSL4R-XXNS-1	Sur-Loc™ Pallet - 4 Rail with (1) Strap and Bracket, No Sides, Professionally Powder-Coated with Standard Paint. <b>Lead Time: Approx. 2 weeks</b>
IPSL4R-XXNS-2	Sur-Loc™ Pallet - 4 Rail with (2) Straps and Brackets, No Sides, Professionally Powder-Coated with Standard Paint. <b>Lead Time: Approx. 2 weeks</b>

### Weldcoa Sur-Loc™ Pallets Professionally Powder-Coated with Standard Paint *with (2) 3/4 Side Rails*

Replace XX with Color Preference: Black (BK), Cardinal Red (CR), Safety Orange (SO), Weldcoa Blue (WB), Safety Yellow (SY), John Deere Green (JG)

Item #	Description
IPSL3R-XX3S	Sur-Loc™ Pallet - 3 Rail with (2) 3/4 Side Rails, Professionally Powder-Coated with Standard Paint <b>Lead Time: Approx. 2 weeks</b>
IPSL4R-XX3S	Sur-Loc™ Pallet - 4 Rail with (2) 3/4 Side Rails, Professionally Powder-Coated with Standard Paint <b>Lead Time: Approx. 2 weeks</b>

### Weldcoa Sur-Loc™ Pallets Professionally Powder-Coated with Standard Paint *with (2) Full Side Rails*

Replace XX with Color Preference: Black (BK), Cardinal Red (CR), Safety Orange (SO), Weldcoa Blue (WB), Safety Yellow (SY), John Deere Green (JG)

Item #	Description
IPSL3R-XX3F	Sur-Loc™ Pallet - 3 Rail with (2) Full Side Rails, Professionally Powder-Coated with Standard Paint <b>Lead Time: Approx. 2 weeks</b>
IPSL4R-XX3F	Sur-Loc™ Pallet - 4 Rail with (2) Full Side Rails, Professionally Powder-Coated with Standard Paint <b>Lead Time: Approx. 2 weeks</b>

# STACK-LOC PALLETS



Shown Above: Two Stack-Loc™ Pallets  
(Part number IPST4R-WB) stacked on top of each other.

## STACK-LOC™ PALLET - 4 RAIL

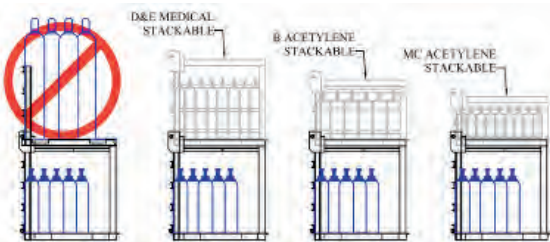
The Stack-Loc™ Pallet is a traditional Weldcoa Sur-Loc™ 4-Rail Pallet with added vertical supports and an X frame for rigidity. Designed to be very versatile. Great option for doubling your working payload on all small cylinder and dry goods.

### DOUBLE YOUR WORKING PAYLOAD

- Features all the benefits and safety of a Sur-Loc™ and more
- Pallets lock on to each other the same way they're secured onto our pallet trucks and trailers
- A maximum of 2000 lbs. can be carried on the upper pallet
- The payload is held in place with traditional binder straps (rated at 10,000 lbs. breaking strength)
- Upper and lower pallets are interchangeable
- Designed for universal uses.

### HIGH QUALITY PRODUCT MADE IN HOUSE

- Stack-Loc™ pallets have 4-way entry and are self-aligning when positioned into a pallet truck or trailer.
- Entire pallet is professionally powder-coated to protect from wear, corrosion, impact, and weather.
- Standard powder-coated paint is available in several colors.
- Galvanizing is an available option for high corrosive environments.
- 100% Made in the USA
- Complies with Federal DOT regulations 49 CFR 393.102 & CFR 177.840.



4-Rail Stack-Loc™ Pallets may have at most, one Stack-Loc™ Pallet (4-Rail, MC, B or D&E) placed on it. This particular product is not intended for standard Sur-Loc™ pallets.

#### Item #

#### Description

IPST4R-BK	Stack-Loc™ Pallet - 4 Rail Model. Designed for Small Cylinders and Carts. Professionally Powder-Coated Black.
IPST4R-CR	Stack-Loc™ Pallet - 4 Rail Model. Designed for Small Cylinders and Carts. Professionally Powder-Coated Cardinal Red.
IPST4R-SO	Stack-Loc™ Pallet - 4 Rail Model. Designed for Small Cylinders and Carts. Professionally Powder-Coated Safety Orange
IPST4R-WB	Stack-Loc™ Pallet - 4 Rail Model. Designed for Small Cylinders and Carts. Professionally Powder-Coated Weldcoa Blue
IPST4R-SY	Stack-Loc™ Pallet - 4 Rail Model. Designed for Small Cylinders and Carts. Professionally Powder-Coated Safety Yellow
IPST4R-JG	Stack-Loc™ Pallet - 4 Rail Model. Designed for Small Cylinders and Carts. Professionally Powder-Coated John Deere Green





Compliant with DOT Guidelines



## STACK-LOC™ PALLET FOR “MC” SIZE ACETYLENE CYLINDERS

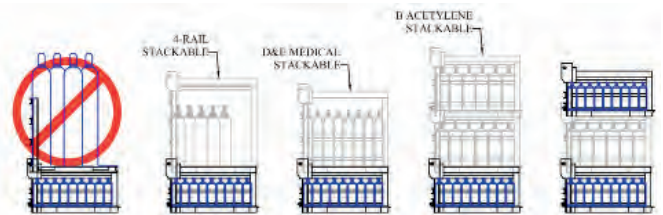
The Stack-Lok™ Pallet MC Acetylene model was designed specifically to alleviate the portability and security problems normally associated with transporting and handling smaller cylinders.

### SAFE AND SECURE

- Each cylinder is individually secured within the Stack-Loc's frame. This prevents the cylinders from escaping but also prevents label damage
- The pallet locks on to the delivery vehicle and the bottles are locked within the cart frame
- To protect the cylinder valve, the pallet has been designed with adequate height clearance
- Each MC Stack-Loc Pallet can carry up to 81 cylinders
- Pallets lock on to each other the same way they're secured onto our pallet trucks and trailers
- Works with any Weldcoa pallet truck or trailer
- Can be stacked up to 5 pallets high for storage in your yard/facility
- Entire pallet is professionally powder-coated for added safety and to also protect from wear, corrosion, impact, and weather.
- Complies with Federal DOT regulations 49 CFR 393.102 & CFR 177.840
- 100% Made in the USA



Shown Above: Three MC Stack-Loc™ Pallets  
(Part number IPSTMC-WB) stacked on top of each other.



Stack-Loc™ MC Pallets may have at most, one Non-Acetylene Stack-Loc™ Pallet (4-Rail or Medical D&E) placed on it. As for Acetylene Stack-Loc™ Pallets, it can have up to two of either kind, (MC or B) placed on it. This particular product is not intended for standard Sur-Loc™ pallets.

Item #	Description
IPSTMC-BK	Stack-Loc™ Pallet - MC Model. Designed for Small MC Acetylene Cylinders Professionally Powder-Coated Black.
IPSTMC-CR	Stack-Loc™ Pallet - MC Model. Designed for Small MC Acetylene Cylinders Professionally Powder-Coated Cardinal Red.
IPSTMC-SO	Stack-Loc™ Pallet - MC Model. Designed for Small MC Acetylene Cylinders Professionally Powder-Coated Safety Orange
IPSTMC-WB	Stack-Loc™ Pallet - MC Model. Designed for Small MC Acetylene Cylinders Professionally Powder-Coated Weldcoa Blue
IPSTMC-SY	Stack-Loc™ Pallet - MC Model. Designed for Small MC Acetylene Cylinders Professionally Powder-Coated Safety Yellow
IPSTMC-JG	Stack-Loc™ Pallet - MC Model. Designed for Small MC Acetylene Cylinders Professionally Powder-Coated John Deere Green

# STACK-LOC PALLETS

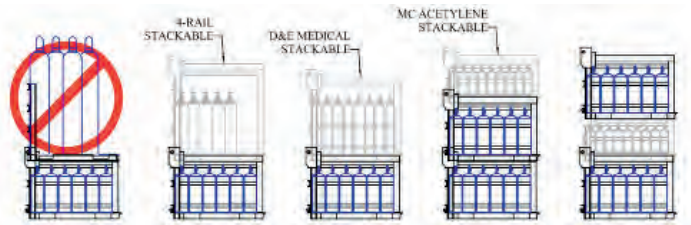


## STACK-LOC™ PALLET FOR B ACETYLENE CYLINDERS

The Stack-Loc™ Pallet B Acetylene model provides a secure, space efficient solution for storing and/or transporting B size Acetylene cylinders. Durable, long lasting product that will provide years of reliable service.

### HIGH QUALITY PRODUCT MADE IN HOUSE

- Capable of handling 36 "B" size acetylene cylinders per pallet
- Each cylinder is individually secured within the Stack-Loc's frame. This prevents the cylinders from escaping but also prevents label damage
- The pallet locks on to the delivery vehicle and the bottles are locked within the cart frame
- Can be stacked up to 3 pallets high for storage in your yard or facility
- Pallets lock on to each other the same way they're secured onto our pallet trucks and trailers
- Works with any Weldcoa pallet truck or trailer
- Entire pallet is professionally powder-coated for added safety and to also protect from wear, corrosion, impact, and weather.
- Complies with Federal DOT regulations 49 CFR 393.102 & CFR 177.840
- 100% Made in the USA



Stack-Loc™ B Pallets may have at most, one Non-Acetylene Stack-Loc™ Pallet (4-Rail or Medical D&E) placed on it. As for Acetylene Stack-Loc™ Pallets, it can have up to two of either kind, (MC or B) placed on it. This particular product is not intended for standard Sur-Loc™ pallets.

Item #	Description
IPSTBA-BK	Stack-Loc™ Pallet - B Model. Designed for Small B Acetylene Cylinders Professionally Powder-Coated Black.
IPSTBA-CR	Stack-Loc™ Pallet - B Model. Designed for Small B Acetylene Cylinders Professionally Powder-Coated Cardinal Red.
IPSTBA-SO	Stack-Loc™ Pallet - B Model. Designed for Small B Acetylene Cylinders Professionally Powder-Coated Safety Orange
IPSTBA-WB	Stack-Loc™ Pallet - B Model. Designed for Small B Acetylene Cylinders Professionally Powder-Coated Weldcoa Blue
IPSTBA-SY	Stack-Loc™ Pallet - B Model. Designed for Small B Acetylene Cylinders Professionally Powder-Coated Safety Yellow
IPSTBA-JG	Stack-Loc™ Pallet - B Model. Designed for Small B Acetylene Cylinders Professionally Powder-Coated John Deere Green





## STACK-LOC™ PALLET FOR D & E MEDICAL CYLINDERS

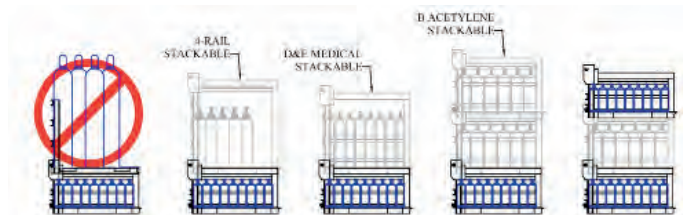
The Stack-Loc™ Pallet D & E Medical model was designed specifically to alleviate the portability and security problems normally associated with transporting and handling smaller cylinders.

### SAFE AND SECURE

- Capable of handling (64) D or E size medical cylinders
- Each cylinder is individually secured within the Stack-Loc's frame. This prevents the cylinders from escaping but also prevents label damage
- The pallet locks on to the delivery vehicle and the bottles are locked within the cart frame
- To protect the cylinder valve, the pallet has been designed with adequate height clearance
- Pallets lock on to each other the same way they're secured onto our pallet trucks and trailers
- Works with any Weldcoa pallet truck or trailer
- Entire pallet is professionally powder-coated for added safety and to also protect from wear, corrosion, impact, and weather.
- Complies with Federal DOT regulations 49 CFR 393.102 & CFR 177.840
- 100% Made in the USA



Shown Above: One D&E Stack-Loc™ Pallet  
(Part number IPSTDE-JG) stacked on top of each other.



Stack-Loc™ D&E Pallets may have at most, one Non-Acetylene Stack-Loc™ Pallet (4-Rail or Medical D&E) placed on it. As for Acetylene Stack-Loc™ Pallets, it can have up to two of either kind, (MC or B) placed on it. This particular product is not intended for standard Sur-Loc™ pallets.

Item #	Description
IPSTDE-BK	Stack-Loc™ Pallet - D&E Model. Designed for D or E size Medical Cylinders Professionally Powder-Coated Black.
IPSTDE-CR	Stack-Loc™ Pallet - D&E Model. Designed for D or E size Medical Cylinders Professionally Powder-Coated Cardinal Red.
IPSTDE-SO	Stack-Loc™ Pallet - D&E Model. Designed for D or E size Medical Cylinders Professionally Powder-Coated Safety Orange
IPSTDE-WB	Stack-Loc™ Pallet - D&E Model. Designed for D or E size Medical Cylinders Professionally Powder-Coated Weldcoa Blue
IPSTDE-SY	Stack-Loc™ Pallet - D&E Model. Designed for D or E size Medical Cylinders Professionally Powder-Coated Safety Yellow
IPSTDE-JG	Stack-Loc™ Pallet - D&E Model. Designed for D or E size Medical Cylinders Professionally Powder-Coated John Deere Green

# PROPANE PALLETS

## PROPANE PALLET WITH SUR-LOC™ LOCKING SYSTEM

The Sur-Loc™ Propane Pallet is an open framed two-tier pallet that holds up to (24) 33 lb. propane cylinders. This pallet is designed for use within a delivery vehicle. It allows the driver to remove the propane cylinders quickly and easily from within the delivery vehicle.

### HIGH QUALITY PRODUCT MADE IN HOUSE

- Built on a standard Weldcoa Pallet Base with the patented Sur-Loc™ Locking Mechanism
- The pallet base is structurally sound
- A grease reservoir that lubricates all of the moving parts every time the lock is actuated (We recommend using an anti-seize compound rather than grease to lubricate the pallet locks)
- Entire pallet is professionally powder-coated for added safety and to also protect from wear, corrosion, impact, and weather.
- Complies with Federal DOT regulations 49 CFR 393.102 & CFR 177.840
- 100% Made in the USA



Item #	Description
IPSLPP-BK3S	Sur-Loc™ Propane Pallet - 4 Rail with (2) 3/4 Side Rails. Designed to handle (24) 33 lb. Propane Cylinders. Professionally Powder-Coated Black.
IPSLPP-CR3S	Sur-Loc™ Propane Pallet - 4 Rail with (2) 3/4 Side Rails. Designed to handle (24) 33 lb. Propane Cylinders. Professionally Powder-Coated Cardinal Red.
IPSLPP-S03S	Sur-Loc™ Propane Pallet - 4 Rail with (2) 3/4 Side Rails. Designed to handle (24) 33 lb. Propane Cylinders. Professionally Powder-Coated Safety Orange
IPSLPP-WB3S	Sur-Loc™ Propane Pallet - 4 Rail with (2) 3/4 Side Rails. Designed to handle (24) 33 lb. Propane Cylinders. Professionally Powder-Coated Weldcoa Blue
IPSLPP-SY3S	Sur-Loc™ Propane Pallet - 4 Rail with (2) 3/4 Side Rails. Designed to handle (24) 33 lb. Propane Cylinders. Professionally Powder-Coated Safety Yellow
IPSLPP-JG3S	Sur-Loc™ Propane Pallet - 4 Rail with (2) 3/4 Side Rails. Designed to handle (24) 33 lb. Propane Cylinders. Professionally Powder-Coated John Deere Green





Compliant with DOT Guidelines



- **Faster**
- **Safer**
- **More Cost Effective**

## PROPANE CAGE WITH SUR-LOC™ LOCKING SYSTEM

The Propane Cage is built on a standard Weldcoa Sur-Loc™ Pallet and has been designed to expedite the “Drop and Swap” process. The cage is manufactured to be a self-contained secure housing for propane cylinders for use indoors and out. The cage has two swinging doors that are secured by lock. The unit has a 4’ x4’ footprint and weights approx. 700lbs.

- Holds up to (22) 33 lb. propane cylinders
- Complies with Federal DOT regulations  
49 CFR 393.102 & CFR 177.840
- 100% Made in the USA



Item #	Description
IPCGPC-BKNS-2DEM	Propane Cage - Full Cage on Sur-Loc™ Pallet Base with Two Doors and Lock. Designed to handle (22) 33 lb. Propane Cylinders. Professionally Powder-Coated Black.
IPCGPC-CRNS-2DEM	Propane Cage - Full Cage on Sur-Loc™ Pallet Base with Two Doors and Lock. Designed to handle (22) 33 lb. Propane Cylinders. Professionally Powder-Coated Cardinal Red.
IPCGPC-SONS-2DEM	Propane Cage - Full Cage on Sur-Loc™ Pallet Base with Two Doors and Lock. Designed to handle (22) 33 lb. Propane Cylinders. Professionally Powder-Coated Safety Orange
IPCGPC-WBNS-2DEM	Propane Cage - Full Cage on Sur-Loc™ Pallet Base with Two Doors and Lock. Designed to handle (22) 33 lb. Propane Cylinders. Professionally Powder-Coated Weldcoa Blue
IPCGPC-SYNS-2DEM	Propane Cage - Full Cage on Sur-Loc™ Pallet Base with Two Doors and Lock. Designed to handle (22) 33 lb. Propane Cylinders. Professionally Powder-Coated Safety Yellow
IPCGPC-JGNS-2DEM	Propane Cage - Full Cage on Sur-Loc™ Pallet Base with Two Doors and Lock. Designed to handle (22) 33 lb. Propane Cylinders. Professionally Powder-Coated John Deere Green



# PALLET MANIFOLD

## 18 CYLINDER GAS PACK PALLET MANIFOLD

**Terrific alternative to costly micro bulk delivery vehicles for safely delivering higher volumes of gas.**

Originally the 18 cylinder pallet manifold was designed as a back up for cylinder banks (cradles, clusters, etc.) The idea being that a distributor could keep several pallet covers and manifolds in storage as they physically needed little space to store. When the need arose, the distributor could simply put the required cylinders on the pallet and slip the cover with manifold over them and Voila! Instant cylinder cluster. This option has now become a standard, rather than an alternative, to cylinder carts for many distributors around the country.

- Higher Volume of Delivered Gas
- Installs Quickly and Without Tools
- Mobile, Easily Moved With Fork Truck
- Made in the USA



### DRASTICALLY IMPROVE EFFICIENCY

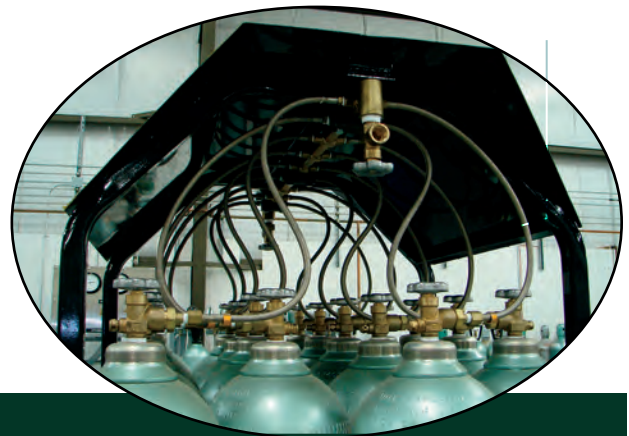
*"By moving from individual cylinders to the clusters, we've saved our customers countless hours in labor for cylinder handling. The installations we've done allow the customer to no longer have to touch the cylinder. We deliver a new pallet, pick up the old one, and all the customer knows is that their gas supply is constant. As a result, they're more efficient, and we're more efficient. We don't have to move 18 separate cylinders—just the pallet. We're also more efficient in our plant. Filling is more efficient, cleaner and safer. And it's a nice-looking package." - David Mahoney, President of Noble Gas Solutions*





## HIGH QUALITY PRODUCT MADE IN-HOUSE

- Hood provides overhead protection to the cylinder, leads, valves and manifold during transit.
- **Made specifically with high gas volume end users in mind, the 18 pack is designed to utilize size "T" 300 CU.FT. cylinders.**
- Pallet and Cover is professionally powder coated to protect from wear, corrosion, impact, and weather.
- Every Weldcoa manifold assembly is 100% hydrostatically pressure tested to 1.5 times the MAWP, 100% nitrogen leak tested and 100% oxygen cleaned, dried, bagged to meet CGA 4.1 requirements.



Standard product comes in Black.  
Different color options available upon request.

## THREE PRODUCTS MAKE UP OUR 18 CYLINDER GAS PACK

### 1. SUR-LOC 3-RAIL PALLET 2. THE COVER 3. MANIFOLD WITH LEADS

	Item #	Description
Pallet	IPSL3R-BTNS-2	3-Rail Weldcoa Sur-Loc™ Pallet, Professional Powder-Coated with Black Textured Non-Skid Paint. Supplied with (2) Binder Straps and Brackets. <b>IN-STOCK ITEM</b>
	PMBKT-18BK	18 Cylinder Pallet Bracket and Cover, Professional Powder-Coated Black. <b>IN-STOCK ITEM</b>
Manifold Options	PM18B-SSBPB580	Pallet Manifold, 18 Cylinder Brass Header, Rigid Stainless Steel Leads, CGA 580, with Standard Valve.
	PM18B-FDBPB540	Pallet Manifold, 18 Cylinder Brass Header, Flexible Double Braided Post-Sintered Teflon Lined Leads MAWP 3,600 PSI, CGA 540, with Standard Valve. <b>IN-STOCK ITEM</b>
	PM18B-FDBPB580	Pallet Manifold, 18 Cylinder Brass Header, Flexible Double Braided Post-Sintered Teflon Lined Leads MAWP 3,600 PSI, CGA 580, with Standard Valve. <b>IN-STOCK ITEM</b>



# PALLETIZED TRUCK BODIES



## PALLETIZED TRUCK BODIES

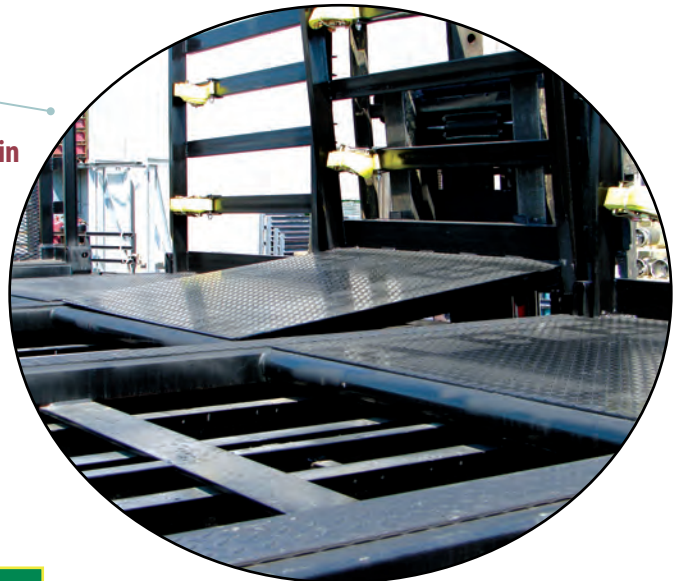
Weldcoa's InstaLoad Pallet System™ with Sur-Loc™ pallets moves more cylinders faster and with less handling. The net outcome is an increase in your production and a decrease in your labor costs. All of Weldcoa's truck bodies are manufactured out of structural steel tubing. They are manufactured in Weldcoa's facility and can be shipped anywhere in the world. The truck bodies can be installed quickly and are secured onto the chassis using U bolts and wood firing strips. Historically, the average Weldcoa truck body will outlive a chassis 3 times over. In each case, the palletized body is simply transferred over to the new chassis.

### HIGH QUALITY PRODUCT MADE IN-HOUSE

- **Our revolutionary palletized filling system will reduce your labor rate, increase your cylinder output, and increase safety in your plant.**
- Move more faster with less handling
- Increase production
- Decrease labor costs
- Bodies manufactured with structural steel tubing
- Available in 4, 6, 8 and 10 Pallet Configurations
- Professionally powder coated to protect from wear, corrosion, impact, and weather.
- Made in the USA



Three of the five largest Global Gas Suppliers currently use our Palletized system to safely secure and economically move their cylinders for the past 25 years.





# PALLETIZED TRAILERS



## PALLETIZED TRAILERS

All Weldcoa Palletized Trailers are manufactured and warranted by Midwest Utility. Once the Trailer has been manufactured by Midwest Utility it is delivered to Weldcoa where the palletized superstructure is installed. Upon completion, the palletized trailer is then shipped to the customer or will have other equipment installed such as a lift gate. The Weldcoa Palletized Superstructure is tested with the pallets in place to make sure that it is ready to enter into service.

**All trailer orders are placed with Midwest Utility at 630-789-2700. Specialized Pallet Trailers are also available.**

## TRAILER CONVERSION/REFURBISH PROGRAM

Weldcoa is happy to provide you with a quote to convert and then refurbish your existing trailers into palletized trailers. This process involves the tear down/stripping of the existing trailer bed and rails. Once we have stripped your trailer to the bare frame we rebuild the trailer so that it can support the palletized frame work. Once Weldcoa has installed the Pallet Super Structure we will perform some or all of the following depending on the project and then send it to the customer :

- Repaired or replaced sidelights
- Repaired or replaced brake lights
- Sand Blasted and repainted
- All necessary wirework done

The customer will be responsible for all mechanicals such as brakes, air lines, tires, landing gear, etc.

**For more information on the Trailer Conversion Process, please contact Weldcoa at (630) 806-2000.**





## WELDCOA - CONSTANT INNOVATION

---

### *INQUIRE ABOUT OUR OTHER PRODUCTS:*

- ✓ Pallets
- ✓ Storage Cages
- ✓ Pigtails / Leads and Manifolds
- ✓ Gas Packs
- ✓ Industrial Gas Fill Systems
- ✓ Industrial Gas Automation
- ✓ Specialty Gas Fill Systems
- ✓ Specialty Gas Automation
- ✓ Cryo Pump Protection and Automation
- ✓ Cryo Pump Install and Repair
- ✓ Welding B-Booms

---

#### WELDING COMPANY OF AMERICA

Weldcoa | 335 East Sullivan Road | Aurora, Illinois 60505  
[www.weldcoa.com](http://www.weldcoa.com)

Phone: 630-806-2000 • Fax: 630-806-2001